



May 2024

Volcano A's, PO Box 2513, Battle Ground, WA 98604

Meeting: Ridgefield United Methodist Church, 1410 South Hillhurst Road, Ridgefield, Washington 98642

The First Saturday of Month – 2:00 PM

Volume 13

Issue 5

www.volcanoas.net



HAVING A BLAST IN 2024



Presidents Note May 1, 2024

A big thank you to Mike Blick & Jim Kelly for organizing & leading the April Tour to the Columbia River Museum. I'm looking forward to see what's in store for May.

Many of us will be heading to Walla Walla for another Smooth Rider Tour May 30th through June 2nd or 3rd, because so many of us will be gone, our June meeting will be late. **Our regular monthly meeting will meet on June 8th, 1:00 PM, Ridgefield United Methodist Church.**

My birthday is on June 22nd and you are all invited to join me for a birthday party, I will be arriving in Ruidoso, New Mexico (the day before the start of the National Model A Ford Club of America meet!) Ha ha. I don't really expect to see any of you – but it would be fun!!!

I have turned in our application for the Ridgefield 4th of July Parade. We will have our usual pot luck at Kathy & Roger Green's house. Drop off food by 8:45 so we can check into the parade staging area by 9:00. Anyone who does not want to do the parade is welcome to stay at the Green's house and maybe help with preparations. Last year we were back from the parade by about noon.

My granddaughters, Leeya, Maddy & I have been working on the Presidents tour. We are thinking about a 4 Ferry Tour. The details have not firmed up yet but I'm hoping that we can spend both nights (July 19 & 20) without having to change motels.

May your engine have a long life and may you have friends that help at every turn of the road.

Sincerely, Roger Green, President, Volcano A's

PS: I was elected President of the Northwest Regional Group, MAFCA, at their meet during the Portland Swap Meet.



Board of Directors 2024

- President: Roger Green - 503-602-2668
Roger_o_green@yahoo.com
- Vice President: Mike Blick – 360-2816460
mblick53@aol.com
- Treasurer: Leonard Willey - 661-609-1988
lindawilley@mac.com
- Secretary: Karen Huset – 360-609-4102
auntcappi@aol.com
- Member at Large: Jim Kelly - 360-910-4649
pdxac@yahoo.com
- Past President: Jerry Lane - 360-600-3158
northforkmuseum@gmail.com
- Editor: Eirik N Huset - 360-606-0507
enhwooddesigns@gmail.com
- Webmaster: Bob Rusunen - 360-828-5317
rrusunen@comcast.net

Committee Chairs

- Community Service: Joyce Swartz
- NW Regional Rep: Roger Green
- Public Relations: Dian Lane
- Refreshments Coordinator: Nancy Wooldridge
- Sunshine: Carma Huset
- Tour Director: Jim Kelly

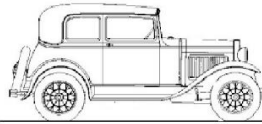
Refreshments

Volunteer members provide refreshments at the monthly meeting.

May - Nancy Woolridge

June – Linda Freimuth

We still have several months open, so please sign up if you can at the next meeting.



Volcano A's

General Membership Meeting Minutes

Saturday April 6, 2023

Due to the Portland Swap Meet taking place the same weekend as our scheduled meeting, Secretary Karen Huset ran the meeting in place of President Roger Green. Board Members Karen and Leonard Willey were attending, while the remaining Board Members were running our club booth at the swap meet.

CALL TO ORDER: 2:10 pm

GUESTS: none

VICE PRESIDENT / TOURS: Lynn Mattingly, April 20th Tour to the Columbia George Musuem.

Eirik, May 18th Mount Saint Helens Tour, 2024 Smooth Riders Tour in May, Nationals in New Mexico in June, Presidents Tour in July, Club Picnic in August and Hub Tour in Redmond, OR in Sept.

TREASURER: Leonard Willey has report available upon request.

SECRETARY: Karen Huset, No Report.

EDITOR : Eirik asked for Recipe of the Month for 2024 monthly News Letter.

WEBMASTER/EDITOR: n/a

COMMUNITY SERVICE: Joyce Swartz, 338 lbs. of food to the Food Bank

LAVA LADIES: Dian Lane Tea in April 13 at the Jubilee Tea House

SUNSHINE: Carma Huset, Sherry Aliff had surgery and is recovering. Club provided flowers.

50/50: \$25 went to Dian Lane, (Joyce Swartz pulled the winning ticket)

Thursday April 18, 2024 Board Meeting

Tours for the year was the main focus of the meeting.

April 20 Columbia George Museum

May 18 Mount Saint Helens Drive

May 29 – June 2 Smooth Riders Tour

June 23rd - 29th MAFCA National, Ruidoso, NM

July 19th – 21st Presidents Tour

Aug. 3rd Club Picnic

Aug. 17th - Tour TBD

Sept. 9th – 12th Hub Tour, Redmond, OR

Pendleton, OR Club looking for local help for 2026 National Meet. NW Regional Clubs looking to rehome Hubley track.



Upcoming Lava Ladies Events

May – Cornell Farms (postponed)

June – Crystal Springs Rhododendron Garden

Club Calendar of Events

May 4th Club Meeting @ 2 pm

May 18th Club Tour - Mt. Saint Helens Drive

May 30th – June 2nd Smooth Rider Tour

June 1st & 2nd Smooth Rider Tour

June 8th Club Meeting @ 2pm

June 23rd - 29th MAFCA National

July 4th Ridgefield Parade / Pot Luck / Meeting

July 19th - 21th Presidents Tour

August Club Meeting @ 2 pm

August ? Club Tour - TBD

Note the June 1st General Membership Meeting will be rescheduled for June 8th.



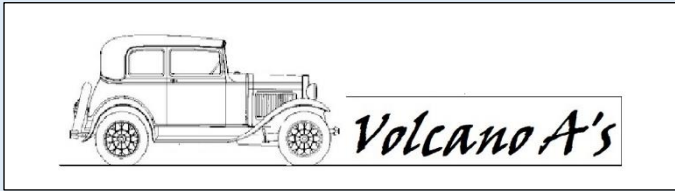
May

Birthdays

2 Scott Parrish
5 Dickson Lee
11 Jerry Willis
29 Jeffrey Jordan

Anniversaries

27 John & Kris Durr



The Columbia River George Museum Tour April 20, 2024

Our group gathered at the Fred Meyers on 4th Plain. Everyone was early! Roger showed up last. On the tour was Jerry & Dian Lane, Jim & Marylan, Jack & Lyn Mattingley, Roger Green. Corley & Nancy were in a slightly modified Model A. Mike & Becky Blick started off in a Model A but deciding that they did not want to end up with a rubber chicken on their bumper (and having some brake issues) returned home and drove a modern car (and they still arrived before Roger!).

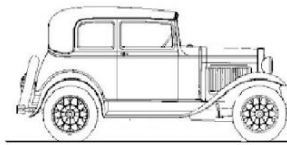
From Freddy's we headed west, but then found our way east. It was a beautiful morning for a drive.



From this photo by the Blick's it looks like Mt. Hood was in view and that Roger's LED tail lights were working.



The Mission of the Columbia Gorge Museum is to assemble, collect, preserve, exhibit, and make available for future generations the historical data, information, and artifacts, obtained for the education and experience of the residents and visitors. They do all of that and more



The Columbia River George Museum Tour April 20, 2024



The Broughton Lumber Company has been a major contributor to the life and economy of the Columbia River Gorge. One hundred years ago, the Broughton Lumber Flume began sending cants, or rough-hewn lumber, down the V-shaped, man-made river from Mill A in Willard, Washington to the terminal mill in Hood/Underwood, Washington. This nine-mile ride took these cants about 9 miles an hour to the lower mill, arriving 55 minutes later at the Columbia River. Flumes, Fur, and Family: A Broughton Lumber Story is open for exploration, along with an actual section of the flume in our lobby and objects from the Museum's Lumber Industry collection.



Club News

The Columbia River George Museum Tour April 20, 2024



Columbia River George, Ken Hochfeld Your Daily Pitcher



Columbia River George, Friderike Heuer Your Daily Pitcher

The journey through the Columbia River Gorge is an ongoing story. Photographers like Friderike Heuer, Ken Hochfeld and others, working with the modern concepts of photomontage and historical influences, to create a revolving photo exhibition of the familiar and loved landscapes that we live in today can always be seen in the museum.



When we were ready to leave, we gathered for a photo (although I don't know where Mike & Jim got off to, I'm sure they will have some excuse!).

Mike Blick did a good job planning this tour and Jim Kelly was a fine tour leader. Sincerely, Random ROG



The Mount Saint Helens Regions

South West Washington is rich in History and Scenery. We can be at the beach, lost in the mountains or even in the desert in a little more than an hour's drive depending upon which direction you choose to travel.

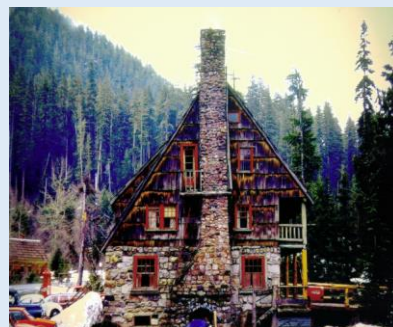
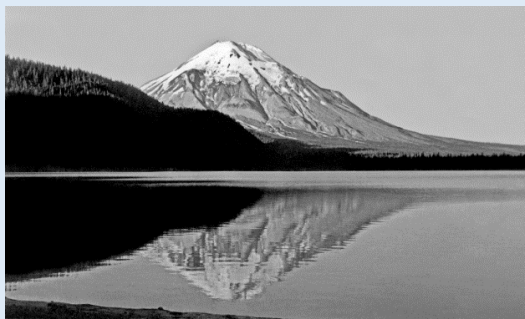
The most Historical and majestic Scenery location for most of us, probably is Mt Saint Helens and its waterways. You might remember the picturesque snow cone that was the mountain prior to May 18, 1980. Likewise, you probably remember where you were or what you were doing that day of the eruption.

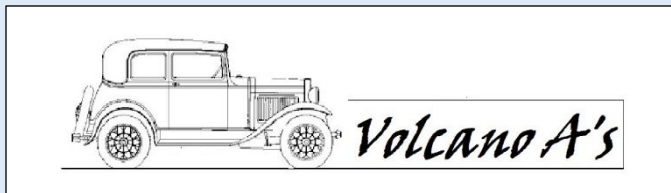
Prior to the 1980 eruption, Mount St. Helens was the fifth-highest peak in Washington. It stood out prominently from surrounding hills because of the symmetry and extensive snow and ice cover of the summit cone, making it look somewhat like a snow cone.



Mount Saint Helens, Swift Reservoir pre 1980

Three main river systems originate from the mountain: the Toutle River on the north and northwest, the Kalama River on the west, and the Lewis River on the south and east. Spirit Lake is the headwaters to the Toutle River and the Lewis River flows through the reservoirs of Swift, Yale and Merwin. Spirit Lake was the most populated by travelers. There had been six camps on the shore of Spirit Lake: Boy Scout (Camp Spirit Lake), the Girl Scout Camp at Spirit Lake, two YMCA camps (Camp Loowit, and Portland YMCA camp), Harmony Fall Lodge, and another for the general public. There were also several lodges accessible to visitors, including Spirit Lake Lodge and Mt. St. Helens Lodge.





**This Month in
SW Washington's History**

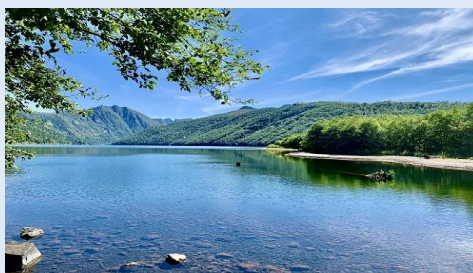
The Mount Saint Helens Regions

Obviously, the destruction of the May 18th eruption was devastating to the region. The waterways of Mt. Saint Helens carried the majority of the destruction further through the region. Spirit Lake received the full impact of the lateral blast from the volcano. The blast and the debris avalanche associated with this eruption temporarily displaced much of the lake from its bed and forced lake waters as a wave as much as 850 ft above lake level on the mountain slopes along the north shoreline of the lake. The eruption tore thousands of trees from the surrounding hillsides and swept them into Spirit Lake. These thousands of shattered trees formed a floating log raft on the lake surface that covered about 40% of the lake's surface after the eruption.



The water level of Spirit Lake is maintained at about 3,406 ft by draining water through Spirit Lake Outlet Tunnel, a gravity-feed tunnel completed in 1985 by US Army Corps of Engineers. The 8,465-foot-long tunnel was cut through Harrys Ridge to South Coldwater Creek, which flows to Coldwater Lake and into the North Fork of the Toutle River. Had the lake level not been stabilized, the dam, which was composed of volcanic avalanche debris created by the 1980 eruption, would have been breached and caused catastrophic flooding within the Toutle River Valley.

Cold Water Lake was created by the eruption, blocked its natural outlet, Coldwater Creek, with volcanic debris. Coldwater, occupies the trough of a glacial valley, has a length of about 5 miles long while the maximum width is no more than half a mile wide. Combustion engines are prohibited on the lake, but anglers reach trophy trout by electric motors, rowing, or kicking. Fishing Gear is limited to artificial flies with barbless single hooks or lures with barbless single hooks and bait is prohibited. The fish are amazing, but be aware that the weather and lake conditions can change rapidly. I have experienced both.



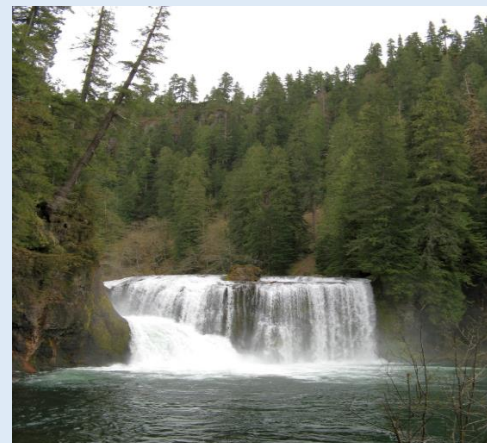


The Mount Saint Helens Regions

The Lewis River waterways didn't have the mass destruction and change that the Toutle River system experienced. The Lewis River actually originates from Adams Glacier on 12,280 foot-tall Mt. Adams in southwest Washington. As the river flows West, and tributaries from St. Helens join in, it flows almost 95 miles and through four major hydroelectric facilities; the Lewis River hydroelectric project consists of Merwin Dam, Yale Dam, and Swift No. 1 and Swift No. 2 which are joined by a canal. Cowlitz County Public Utility District owns the Swift No. 2 facility, while PacifiCorp owns Merwin, Yale and Swift No. 1.



The reservoirs have several state, corporate and privately owned campgrounds along with boat ramps on them. Camping, Boating and Fishing is a busy seasonal recreation on this system nowadays. Hiking and camping is also a favorite among travelers on the upper and lower Lewis River.





**This Month in
SW Washington's History**

The Mount Saint Helens Regions

The Kalama River originates just south of Mount St. Helens. It flows generally west, joining the Columbia River after traveling about 45 miles. It too has a few campgrounds on it, but has been cut off over the years with lands being bought by Weyerhaeuser. As the Kalama originates in the Goat Marsh Valley, there is the Kalama Horse camp and trail, upper falls and Merrill Lake. Access to the lower section of the Kalama is now restricted to Weyerhaeuser Recreational Permit holders. It is a lovely stretch of river, especially if you are able to focus on the 100 foot wide strip of trees at river's edge and ignore the clearcut devastation that now defines Pacific Northwest private timber holdings.



Forty-four years after May 18th, 1980 the region is still scenic and even richer in history. Even more important as we now follow the redevelopment of the area after the eruption, in our era. Our May Volcano A's tour will celebrate our clubs Namesake... join us in celebration and see some of these sights!!!





**This Month in
Fashion & Entertainment**

April Showers Bring May Flowers
by **Karen Chappell**

April showers bring May flowers,
That is what they say.
But if all the showers turned to flowers,
We'd have quite a colourful day!

We'd have fireweed and milkweed
And many more different flowers.
Mexican star and shooting star,
Falling in the showers.

There'd be bluebells and cockleshells,
Tulips red and green,
Daffodils and Chinese squill,
The brightest you've ever seen.

And if all the showers turned to flowers
On that rainy April day,
Would all the flowers turn to showers
In the sunny month of May?

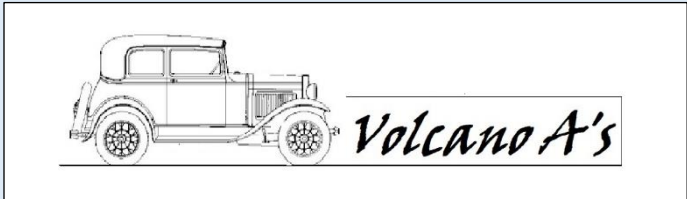
You'd see tiger lilies and water lilies,
Carnations pink and blue,
Forget-me-not and small sundrop
Glistening with the dew.

This is an old saying that most agree originated from a poem by Thomas Tusser, dating back to 1157. There also is a translation from the fourteenth century from poet Geoffrey Chaucer. Tusser's reads "Sweet April Showers Do Spring May Flowers", while Chaucer's translation starts with "When in April the sweet showers".

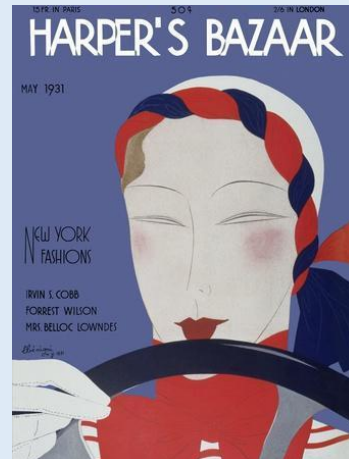
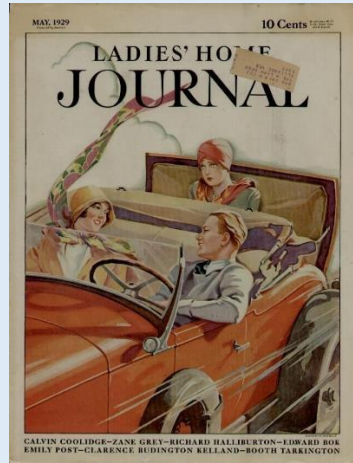
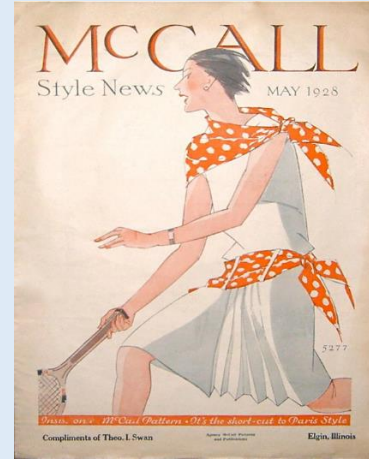
Either way, with the April rains or the May flowers, the Spring always involves new fashions.

There are so many tips available about 'how to get the era fashion look', hemlines, waistlines, fabrics, etc. Every year spring appears suddenly, catching us all off guard. We face the eternal question of what to wear during this time. For spring, blouses featured 'softened' feminine collars. Both solid and patterned dresses were popular for spring. The dominant colors for both were black, navy blue, grey, and neutrals like brown and beige. Solid-colored pieces served as a backdrop for the bright contrasting spring accessories. Print pieces would feature bright colors to which the accessories would be matched, usually against a dark background. Sheer fabrics were popular in dresses for warmer days, with cotton and rayon for intermediate days, and wools for chillier ones.

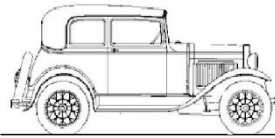
**This Month in
Fashion & Entertainment**



Spring Fashions 1928 – 1931 as seen on Covers and Centerfolds



Model A Garage



Volcano A's



These tools are described in detail in the "*Restoration Guidelines & Judging Standards*" published jointly by MAFCFA and MARC.

The original tool kit supplied with Model A and AA vehicles consisted of the following 13 items:

1. Adjustable Wrench
2. Engine Crank and Wheel Lug Wrench
3. Grease Gun
4. Instruction/Owner's Manual
5. Jack and Handle
6. Oil Can (thru May 1928)
7. Open End Wrenches - 7/16 x 1/2 & 9/16 x 5/8
8. Pliers (screwdriver blade on end of handle)
9. Screw driver
10. Spark Plug/Cylinder Nut wrench
11. Tire Iron
12. Tire Pump
13. Tool Bag



Cinco De Mayo One Pan Dish

In a cast iron or regular skillet...

Ingredients

- | | |
|----------------------------|-----------------------------------|
| 1lbs. Gound Beef | ¾ cups Green Bell Pepper sliced |
| 2 tbsp. Soy Sauce | ¾ cups Yellow Bell peppers sliced |
| 2 tbsp. Lime Juice | ¾ cups Red Bell pepper sliced |
| ¼ tsp. Chili Powder | 1 cup Sweet onion chopped |
| 2 tbsp. Oil | 1 tbsp. Minced Garlic |
| ½ tsp. Cumin | Salt & Pepper to Taste |
| 1 Lime sliced and Squeezed | Mexican Blend Cheese or Mozerella |
| Corn or Flour Tortillas | |

Instructions

Marinate the beef with soy sauce, chili powder, lime juice and garlic. Chop all of the veggies and in a hot pan sauté them until soft. Add beef mixture and stir until beef is cooked. Add salt and pepper and stir. Add cheese and cover until cheese is melted. Warm up tortillas. Serve with salsa and lime. You can substitute beef with shrimp and bell peppers with zucchini.



Wanted Recipes for this page in the future. Email them to enhwooddesigns@gmail.com



Buy / Sell / Trade / Wanted Business

Wanted: Type 2 or Generation 2, 1928 left & right front fenders. Left fender must have the original wheel opening installed. The fender flange must be 5 3/4". Type 1 was 7" and Type 3 was 3 1/8". Decent to good condition, with minimum repair work needed...Please. Not asking for much, am I.

Wanted: July 1928 Open Cab Doors right & left. They would be the type that accepted the dovetails on the doorposts.

Wanted: Original Glass Rear View Mirror, which is a Type 3, M-3.

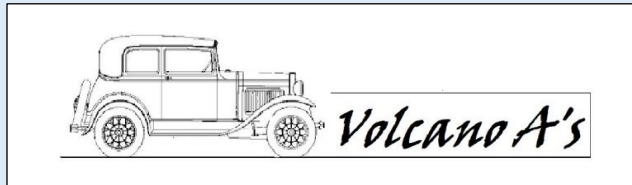
Steve Plucker (509) 749-2211 pif@bmi.net

For more information on the fenders, please go to the Vintage Ford Forum, Model A Ford section, Plucks Articles / Research, Evolution of the 1928-1929 Front Fenders. Information on the rear view mirror can also be found on the Vintage Ford Forum, Plucks Articles / Research, Part 4 of the Evolution of the Model A Ford Rear View Mirrors. There you will see the type of glass mirror.

FOR SALE

1. 180 AMP ARC WELDER WITH HOOD, LEADS AND 50 FT heavy duty cord. (\$95.00)
2. 1962 Corvette items
3. GM dinner ware (nice) several items
4. K. R. Wilson tools (what are you wanting)?
5. Miscellaneous Ford books (\$5.00 and up) mostly 49/54
6. NOS (FORD) 6V Generator (\$90.00)
7. Desk from the Oregon Journal with chair (\$150.00) all oak.
8. Like new studded snow tires, mounted with 2009 Chev/GMC wheels, less than 1000 miles. Factory wheel (\$850)
9. Excellent mounted factory wheels studded tires from 96 Eldo (\$450)
10. MAX oscillating spindle sander (\$750).
11. Small contractor table saw (\$75.00)
12. Many Model A engine blocks and parts
13. 2-Honda 55's (\$500) for both
14. 10' Clipper Craft drift boat (\$600)
15. Boat trailer, needs tires (\$350)
16. New Mdl. A pistons

What are you needing? Call Greg Edwards 503-357-3980



Support Our 2024 Club Sponsors


BECKER'S LLC est. 1965  Parts

'T' and 'A'

P.O. Box 374 - Eagle Creek, OR 97022-0374

(503) 367-9676

beckersautoparts@yahoo.com

C'S AUTO MACHINE SHOP

- FLYWHEEL GRINDING
- RESURFACING
- BORING
- THERMAL CLEANING
- ROD REBUILDING
- BLOCK DECKING
- VALVE GRINDING
- ENGINE REBUILDING
- KNURLING
- PIN FITTING
- PRESS WORK
- ROTORS & DRUMS

ANTHONY
574-4934

EDM SPECIALISTS IN
REMOVING BROKEN TAPS,
DRILLS, STUDS & EASY-OUTS

OPEN M-F, 8 am-6 pm
800 NE 86th Street
Vancouver, WA 98665

WHOLESALE FLEET

EREGOV
GRINDING

KEN HEARD
(360) 256-7985
(503) 252-5505
FAX (360) 256-7465

5913 NE 127TH AVE. #200
VANCOUVER, WA 98682

We Save You Money www.costlessautoparts.net

Cost Less Auto Parts™

"NO EXCUSES, Get it done!"

Orchards
360-254-5710
10507 NE 53rd St
Vancouver, Wa 98662

Hazel Dell
360-695-4423
7215 NE Highway 99
Vancouver, WA 98665

 **HART RADIATOR**
Complete Radiator Service

501 Grade Street, Kelso
Fax 360-425-1189

*Auto, Truck & Industrial
Radiators, Heaters, & Air Conditioners*

360-425-6220

Doug Hart
360-430-3615 Cell

Allen Hart
360-430-9169 Cell

Looking to advertise your business,
send your information to
enhwooddesigns@gmail.com ,
or call Eirik Huset at 360-606-0507.



Smooth Riders Tour



Smooth Riders Tour, May 30th – June 2nd

Well, after last year's cancelation due to unsafe driving conditions. The Smooth Rider Tour 2024 is on. It will follow the same route from Walla Walla, WA to Clarkston, WA except we will take a different route through the wheat fields of central Southeastern Washington. There will be about 12 miles of gravel road but it is very, VERY scenic to say the least. At least we will be off of Highway 12 for a bit. I know this might not be good for some of you BUT you can always take the pavement route to Clarkston where we will spend the nights of May 31 and June 1, 2024! If you wish to get on the mailing list, please let me know. Steve Plucker, Walla Walla Sweet A's, pif@bmi.net

Northwest Regional Hub Tour Redmond, Oregon USA September 9 - 12



September 9, 2024 (Monday) Registration will begin at 8:00 a.m. at the Sleep Inn & Suites Conference Center. You will receive a Hub Tour booklet containing the schedule and all of the available tours listed.

September 10, 2024 (Tuesday) Touring on your own. Restorers Class Evaluations start at 9:00 a.m. Tailgate Swap Meet is from 2:00 to 4:00 p.m. Hubley check in at 4:00 pm, NWRG Representatives meeting at the Sleep Inn & Suites Conference Center at 5:00 pm, dinner on your own and Hubley races start at 7:30 p.m.

September 11, 2024 (Wednesday) Grand tour will include sites around Central Oregon and will stop at Baldy's BBQ in Redmond for lunch between 1:00 — 2:30 p.m. After lunch you will be free to tour on your own, explore downtown Sisters, Redmond, Prineville or Bend.

September 12, 2024 (Thursday) More touring on your own and Farewell Dinner at 6:00 p.m.



Model A Ford Club of America

Over 25 Years on the Web - 1997-2024

"The Largest Car Club in the World Dedicated to One Type of Automobile"



<https://www.facebook.com/groups/MAFCA/>

<https://www.instagram.com/modelafordclubofamerica/>

<https://www.facebook.com/groups/EraFashionCommitteeMAFCA/>

Model A Ford Club of America
250 South Cypress.
La Habra CA 90631-5515



Over Eighty Years Ago...Henry Ford created his legendary Model A Ford, now an icon of Americana representing the transition from flappers to breadlines as the depression rolled across the continent.

You can help to preserve Henry's Lady, the Model A Ford and the dynamic era of 1927 through 1931 by joining the Model A Ford Foundation. MAFFI is dedicated to the preservation of historical information and memorabilia of this time of change in America.

Model A Ford Foundation, Inc,
P.O. Box 28,
Peotone, Illinois, 60468



The Model "A" RESTORERS CLUB

The Model "A" Restorers Club
6721 Merriman Rd. Garden City, MI 48135
734-427-9050
model-a-ford.org

The Model "A" Restorers Club - MARC, founded in 1952, holds as its aims the encouragement of members to acquire, restore, preserve, exhibit and make use of the Model "A" Ford. And most importantly, to enjoy the fellowship of other Model "A" Ford owners around the world.



Model A Ford Club of America

Over 25 Years on the Web - 1997-2024

"The Largest Car Club in the World Dedicated to One Type of Automobile"



Presidents News

May 2024

As the first models of the venerable Model A approach 100 years since their introduction, I feel that the Model A Ford relevance to the collector car hobby is as strong as ever. True, we are gradually losing the generation that drove these cars on their first date, commuting to high school and/or college or were able to save up their own money to purchase one as their first car. As an attractive, serviceable and affordable entry into the collector car world, there are few cars that offer all the Model A does.

The many attributes of the Model A that have drawn ownership into its ranks throughout the years are still relevant today as they were in the 40's, 50's, 60's or 70's. In spite of how cars are driven today, the Model A is still a car you put on the road and go cruising. With the large network of suppliers, restorers, knowledgeable experts available for fielding "how to" questions, I cannot think of a better or easier car for getting into the old car hobby. Hence, the need for us "old guys and girls" to continue introducing the car to new members, younger members and even our youth.

In prior years MAFCA has clearly supported the concept that youth are essential to the Model A hobby's future and chapters are the means to introduce youth to the hobby. Establishing club activities that invite youth participation is a fundamental key to turning our youth into lifelong hobbyists. May of each year has been designated as **Model A Youth Month**. Now is the time for chapters to complete their planning and begin to publicize and hold their event.

Also, don't forget the two great organizations that are dedicated to introducing youth to our hobby: [The Model A Youth Restoration Award, MAYRA](#), provides financial support to youth whose interest in the hobby is demonstrated by their efforts in restoring a Model A and the [Model A Youth Scholarship Fund](#) provides financial support to assist children and/or grandchildren of any MAFCA/MARC member in pursuing their undergraduate education, whether it be a state university, college or technical school. Both, or either organization will appreciate your support.

I would like to remind everyone that now is the time for you to decide if you are interested in participating in MAFCA's leadership as a National Director. [Information is available HERE on our website](#). Additionally, each Director is available to answer your questions and help steer you in the right direction to run for office. The future of MAFCA depends on volunteers today. There is no better time to step up and become a National Director.

Our 2024 MAFCA national convention, Southwest "A"ventures, is scheduled for June 23 – 29 and is being hosted by the Southwest Model A's. Ray Gabaldon and the rest of the tour planning committee have planned a great list of activities and are working diligently to put together a great outing. Check their web page [SouthWestAVentures.com](#) for information on registration, including the registration forms, convention clothing items, raffle items and access to purchasing raffle tickets. Sounds too good to miss. I hope to see you there!

"See you down the road!"

Robert Bullard, 2024 MAFCA President

VOLCANO A's - Ford Model A Club
P O Box 2513
Battle Ground, WA 98604

The Volcano A's is a non-profit organization dedicated to the restoration and preservation of the Model A Ford. Membership is open to all persons that are interested in the Model A Ford.

Membership in MAFCA National Club is optional for all members except 'Officers' of the Volcano A's, who must be MAFCA members.

Alcoholic beverages are not served at club functions. Any member choosing to partake of such beverages during club functions shall stand accountable for his own actions. Neither Volcano A's nor fellow officers shall be held responsible.

Meetings are the First Saturday of Month @ 2:00 PM

Ridgefield United Methodist Church, 1410 South Hillhurst Road, Ridgefield, Washington 98642

Annual dues are \$20.00

Please right click and print this Application Form and send to above address

NEW MEMBER INFORMATION

Date: _____ Year Joined: _____

Please complete the following information for our Club Secretary

NAME _____ BIRTHDAY _____

SPOUSE _____ BIRTHDAY _____

ADDRESS _____ ANNIVERSARY _____

CITY, STATE, ZIP _____

TELEPHONE _____ EMAIL _____

Other Family Members living at home

Names _____ Birthday _____

CAR Information: (Model, Year, Body Style) _____

Revised 9/2/2023

Invitation to Join Model A Ford Club of America

~Membership Benefits~

The *Restorer* magazine (6 issues per year) - Technical Support (free via mail or email)
MAFCA Chartered Chapters in your local area - National Meets
National Banquets - National Tours
MAFCA also produces publications for sale including
Restoration Guidelines & Judging Standards; Paint and Finish Guide; Hardware Standards
A series of publications on How to Restore Your Model A; Era Fashion Guidelines; a number of
Other publications related to the Model A Ford and its era

Membership Form

*Please select your membership type? * Required Fields

U.S. Membership - \$50

Canada/Mexico Membership - \$60

International Membership - \$70

International Membership w/ only online publication of *The Restorer* magazine - \$50

The Restorer Print Publication is included with every membership.

Digital Edition E-mail (optional)

*First Name *Last Name

Spouse's First Name Last Name

*Address

*City, State, Postal Code

*Country

E-mail

*Telephone

Permission to publish my telephone number in future Membership Rosters

Optional Initiation Package (Only \$9 extra)

For New Members Only!
1 - Back issue of *The Restorer*
1 - MAFCA Decal
1 - Name Badge

Would you like to purchase a gift membership?

How did you hear about us?