



**Volcano A's, PO Box 970, La Center, WA 98629**

[www.volcanoas.net](http://www.volcanoas.net)

Meeting: Church of the Nazarene - 16850 NE Fourth Plain Blvd, Vancouver, WA - Second Monday of Month - 7:00 PM

Guys breakfast meeting every Wed. (7:00am) at Hockinson Café, 219 NW 20<sup>th</sup> Ave, Suite 100, Battle Ground, WA

Guys lunch on Fridays (11:30 am) at Benny's Pizza & Café on 4219 St Johns Rd NE, Vancouver, WA

**Volume 6 Issue 10**

**October**

**2017**

**2015 MAFCA Newsletter Certificate of Merit**

**2015 MAFCA Website of the Year**

**2013 MAFCA Newsletter of the Year 2013 MAFCA Website of the Year**

### **2017 Club Officers**

**President:**

Jerry Lane - 360-263-6980

[northforkmuseum@gmail.com](mailto:northforkmuseum@gmail.com)

**Vice President:**

Roger Green - 503-602-2668

[Roger\\_o\\_green@yahoo.com](mailto:Roger_o_green@yahoo.com)

**Treasurer:**

Linda Willey - 360 687-0916

[lindawilley@mac.com](mailto:lindawilley@mac.com)

**Secretary:**

Sherry Rusunen - 360-828-5317

[rrusunen@comcast.net](mailto:rrusunen@comcast.net)

**Member at Large:**

Leonard Willey - 360-687-0916

[lindawilley@mac.com](mailto:lindawilley@mac.com)

**Past President:**

Jack Dusenberry - 360-256-0149

[jdsie@comcast.net](mailto:jdsie@comcast.net)

**Editor/Webmaster:**

Bob Rusunen - 360-828-5317

[rrusunen@comcast.net](mailto:rrusunen@comcast.net)

\*\*\*\*\*

Articles and contributions are encouraged and may be used as space permits. The deadline for all articles is the 20th of the preceding month. The Volcano View is a monthly publication of the Volcano A's Chapter - MAFCA E-mail all proposed articles to: [rrusunen@comcast.net](mailto:rrusunen@comcast.net).

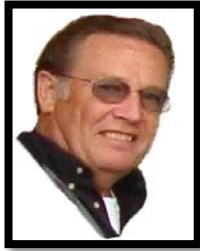
### **Photo of Month**



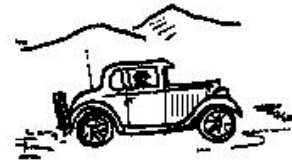
### **Model A's on Covered Bridge Tour**

### **Happy Columbus Day October 9th**





## ***President's Note*** ***September 14, 2017***



Last week we just finished our Covered Bridge Tour East of Albany in picture perfect farming communities, no roadside seminars - just miles & smiles. After a long day of traveling our rooms at Albany Comfort Suites felt very good and so did the local restaurant. A big thank you goes to Dian for planning our hotel and restaurants and diligently studying the GPS to make the many turns through the county.

Tomorrow Dian and I plus another couple will be leaving for a three-week tour thru Idaho, Montana, South Dakota and Minnesota, so after enjoying the trip we should be home before the next meeting on October 9<sup>th</sup>.

Roger has a great tour planned for us North of Carson on October 21<sup>st</sup>, which will be exciting. Don't know if I should bring a straw hat or a parka.

**Jerry**

---

### **Committee Chairs**

**Community Service:** Joyce Swartz/Tom  
Ryan

**Garage Workshop:** Tom Pagel

**Library/Historian:** Open

**NW Regional Rep:** Jack Dusenberry

**Public Relations:** Dian Lane

**Refreshments Coordinator:** Nancy  
Wooldridge

**Sunshine:** Pat Dusenberry

**Tour Director:** Roger Green

**Happy Halloween!**



### ***Front Page Photo***

*President's Tour with Model A's  
going thru a covered bridge near  
Albany, Oregon.*

### ***Knowledge Nugget***

October 1931, "Scarface" Al  
Capone was sentenced to 11 years  
in prison for tax evasion.

**Volcano A's General Membership Meeting Minutes**  
**September 11, 2017**

**CALL TO ORDER:** 7:00 pm by President Jerry Lane.

**GUESTS:** Scott & Angela Parrish were introduced as new members.

**TOURS:** Roger Green reported that the President's Tour to Salem/Albany covered bridges was a great success. Next tour is Oct. 21<sup>st</sup> to Gifford Pinchot National Forest for a 130-mile tour. Bring a lunch with you! Nov. 11<sup>th</sup> is the Veteran's Day parade. Dec. 11<sup>th</sup> is our potluck Christmas party.

**TREASURER:** Linda Willey gave the financial report.

**EDITOR/WEBMASTER:** No Comment.

**SUNSHINE:** Patty Brost of the Beaver Club passed away. Her funeral was Sept. 7, 2017.

**LAVA LADIES:** Babies in Need is Sat. Oct. 14<sup>th</sup> at 11:30 at Rockies Pizza in Battle Ground. Bring a friend and baby items!!

**COMMUNITY SERVICE:** Food brought in last month totaled 97 #'S bringing the total for the year to 575. BUT then Tom Pagel took in 351 #'s and Scott Parrish took in 533 #'s bringing the year's total to 1459 #'s!

**OLD BUSINESS:** Minutes were approved and seconded by Gary Swartz and Jack Dusenberry. Jerry Lane reported the covered bridge tour was great seeing 8 bridges and covering 250 miles. The Comfort Inn was excellent! Also, NO road side seminars; however, Jerry did experience a "small" fire on the way home caused by a hot wire to the fuel pump!

**NEW BUSINESS:** Veteran's Day parade is Nov.11<sup>th</sup>. We will meet at 9:30 and be in place by 10:00.

**RAFFLE:** Gary Swartz won \$28.00 and the club received \$27.00.

**ADJOURNED:** Meeting was adjourned by Jerry Lane.

Submitted by Sherry Rusunen.





### **Lava Ladies**

Thanks to all who donated and brought school supplies to our August Picnic meeting.

For our October meeting, we are collecting socks & underwear for the Feet's & Seats donation to the Share House. They are looking for adult and children's sizes, whatever you can find on sale!!

Our next Lava Ladies gathering is our annual Babies in Need event, bring your layette items and we'll enjoy the pizza & salad buffet at Rocky's Pizza in Battle Ground. See you at 11:30 on Saturday, October 14<sup>th</sup> and by the way, bring a friend!!

### **President's Covered Bridge Tour**



## HAPPY BIRTHDAY!

1 Lynn Mattingley  
9 Dian Lane  
9 Bibbi Lee  
16 Jennie Ryan  
17 Kathy Neilsen  
19 Carlene Willis  
26 Diana Carlile  
30 LeRoy Helyer  
31 Jane Hall

### Refreshments

**October:** Joyce Swartz & Carma  
Huset

**November:** Roberta Emerick & Dianne  
Earnest

**December:** Holiday Potluck @ Lane's

### A Comment from Corley

I was out driving today and was passed by a red 1930 Model A Tudor with a dog in the passenger seat. The sun was shining, the driver was relaxed and smiling, the dog had his head out the window and his drooling tongue out taking in the wind.

I thought, "Man that is so cool! --- It's what I should be doing!" I went home... fired up one of the Model A's and hit the open road! After a mile or so my tongue dried out and I was taking some road grit and a few bugs in my mouth.

It wasn't as much fun as I expected. Maybe I should have pushed out the deflector a bit? Any advice out there as to what I need to do?

### Ford Photo of the Month



1931 400-A Convertible Sedan

### Welcome New Member

Scott & Angela Parrish  
17707 NE 50<sup>th</sup> Ave.

Vancouver, WA 98686  
360-259-8080

[ScottyBeads@yahoo.com](mailto:ScottyBeads@yahoo.com)  
1930 55B Tudor Sedan

### McClellan Overlook Tour

October 21<sup>st</sup>, Saturday  
Meet at 9:30 Fred Meyer Parking Lot  
11325 SE Mill Plain Blvd.

Vancouver, WA

Carson, get gas if you need it  
McClellan Overlook, potluck lunch  
Tour on to Cougar and La Center

Note: Periodically some materials printed in our newsletter may have been borrowed from other club newsletters. We thank other clubs for sharing their newsletters with the Volcano A's. Also, when sources are known they will be included.





**FANCY TWEED COATING**  
[THREE-FOURTHS WOOL]  
**\$6.98**  
POSTPAID

**17V8675—Tan**  
CONTRASTING piping on the collar matched with narrow inserts on the pockets, lend an attractive note of trimming to this tailored sports model of fancy, small weave tweed (three-fourths wool, balance Rayon, and cotton). It is a sturdy wearing coat of swaggy lines—finer and better made garment than one would imagine judging it by price. Has wide, button trimmed cuffs. Lined with strong Satene.

Misses' and Junior Sizes—14 to 20 years. Corresponding lengths, 41 to 44 inches. State size.



**THE NEW SILHOUETTE EXPRESSES ITS HIGHEST CHARM IN THESE COATS FOR MISSES**

Sizes for Misses and Juniors

Misses' Sizes.....	14	16	18	20 years
Junior Sizes.....	15	17	19	years
Lengths.....	41	42	43	44 inches
Bust Measures.....	32	34	36	38 inches

*Smart  
Lapin  
Coney  
fur*

*Genuine  
Squirrel  
fur  
collar*



**FINE ALL WOOL BROADCLOTH ALL SILK WEARWEAVE SATIN LINING**

**17V8670—Tan**  
**17V8671—Black**  
**17V8672—Burgundy**

**MODEL** at left. A stunning new coat with graceful low placed flare fulness at each side. As fine in quality as it is smart in style—and the expert tailoring of the garment also stresses the fact that it is a wonderful value for the money. Has a stitched and bow trimmed collar; the sides and back show strap inserts; the sleeves have button finished folds. Richly lined with All Silk Wearweave Satin.

Misses' and Junior Sizes—14 to 20 years. Corresponding lengths, 41 to 44 inches. State bust measure.

**\$16.98**  
POSTPAID

**\$22.50**  
POSTPAID

**\$26.95**  
POSTPAID

*Our Two  
Finest Coats  
for Misses*

**RAM'S HEAD ALL WOOL BROADLOOM DOWNE-TEX ALL SILK WEARWEAVE SATIN LINING**

**17V8680—Tan**  
**17V8681—Light Green**  
**17V8682—Light Navy Blue**

**CR**EP fabric is a fine basket weave All Wool coating, of soft downy finish and supple texture. Observe the circular flounce treatment of the lower back and sides—and the charming frame collar of the new Lapin Coney fur. The back of the collar, the smartly shaped cuffs and sash tabs show patterned stitchings. Has All Silk Wearweave Satin lining.

Misses' and Junior Sizes—14 to 20 years. Corresponding lengths, 41 to 44 inches. State bust measure.

**BOTANY ALL WOOL REPBLOOM ALL SILK CREPE SATIN LINING**

**17V8690—Navy Blue**  
**17V8691—Tan**

**OUR** finest coat for Misses! A beautiful creation, inviting slim tailored lines with the swaying fulness of tapered circular godet inserts that lend it grace at the lower sides and dipping back. A fashion perfect, fabric perfect coat—exquisitely tailored—adorned with a flattering collar of genuine Squirrel Fur and further smartened with dashing cavalier style, stitich trimmed, flare cuffs. The back is slit seamed. Lined with rich All Silk Crepe Satin.

Misses' and Junior Sizes—14 to 20 years. Corresponding lengths, 41 to 44 inches. State bust measure.

**THE NEW AND FASHIONABLE CELANESE MOIRE**  
**\$12.98**  
POSTPAID

**17V8685—Black**

**A** LOVELY graceful dressy coat of that fabric marvel of the age—rich Celanese Moire—the only moire that will not loose its smart pattern in dampness, pressing or cleaning. The coat is made with a wrapover draped front, slightly dipped back and flowing scarf throws pulled through a button trimmed tab at back of the collar. Trimmed with black silk strap inserts. Has guaranteed lining of Rayon and Cotton—interlined for extra wear.

Misses' and Junior Sizes—14 to 20 years. Corresponding lengths, 41 to 44 inches. State bust measure.

"HOW TO ORDER" AND OTHER INFORMATION - SEE INDEX FOR PAGE

P159B C-K-MN **55**



## Technical Notes

### Jim's Tech Tip for September

by Jim Cannon  
2017 MAFCA Technical Director



### Instrument Panel Light Too Bright?

I have always found the instrument panel light on my Model A to be too bright (and too hot! Ouch!). I would turn mine on for a few seconds, and then turn it right back off. Here is a simple fix: put a 12-volt, 3 candlepower tail light bulb in your 6 volt Model A instrument panel. That would be a #67 bulb, available at any auto parts store. Instead of being so bright, it will glow a nice, soft orange color because it's operating at half of the voltage it was designed for. Once your eyes get used to the dark, it gives all the light you need to see the instruments. You will gladly leave it on for the entire night drive.

PS - the bulb number to do this on a car that has been converted to 12 volts is a #623 bulb. Harder to find, usually special order.

## MAFFI Newsletter Minute

September 2017

It will be a challenge to top this year's Model A Day! With over 120 Model A's attending we were grateful to be able to view a number of very rare and unique Model A's brought to our museum by hobbyists from many parts of the country. You know you are in special company when you are looking at "1 of only 2 existing in the world". But that's what Model A Day brings to our hobby...an opportunity to meet and exchange information with other hobbyists and to explore rare items and exhibits associated with the Model A.

Model A Day also offered us the opportunity to welcome Larry Wallace, Ross Milne and Tom Mack as new trustees carrying on our tradition of bringing in new talent each year to help us make MAFFI and our museum the bet experience for our hobby. We also welcome Olle Bergstrom as our newly installed International Liaison who will help promote MAFFI in Europe as well as provide information about the European Model A and operations.

To all in attendance this year's Model A Day, we're glad you came and hope you really enjoyed this special weekend! If you weren't able to attend this year, join us in 2018. Yes it will be a challenge to top 2017, but we're working on something great for next year.





Header from the MAFCA Website

## MAFCA President's Page – Happy Begg September 2017



The destruction in Texas has been catastrophic in the wake of Hurricane/Tropical Storm Harvey. Harvey dumped more than 40 inches of rain in parts of southeastern Texas and into Louisiana. We have many, many members directly in the path of the heavy rainfall, tornadoes, and devastating flooding. We all have friends affected by this storm. The flooding and its aftermath will continue to be a problem for quite some time to come. I urge all of our members to make a donation to help the victims. Please check on your Model A friends and offer whatever help you are able.

The National Tour kicks off on September 24th in Paso Robles, California. There is still time to register and enjoy this trip up the California coastline and over the Golden Gate Bridge into Marin County. [Click here for registration forms](#). The Bakersfield Chapter has a fun filled week planned for everyone!

Our annual National Awards Banquet is quickly approaching in late November and I hope to see you in Oklahoma City! The Sooner Model A Club is our host for the event. Come help celebrate their 50th Anniversary! We will also celebrate all the great works of MAFCA members for their efforts to help make the Model A hobby the best it can be. Plus, the 2018 MAFCA Board of Directors will be installed. Register, today! [Click here for registration forms](#).

International Model A Day is **September 16**. Your MAFCA Board will be out and about meeting and greeting Model A enthusiasts at the Model A Museum. We are looking forward to seeing you there. I hope you are a member of the Ford Model A Museum. If not, [click here to join](#), today! Model A Day at the museum will be a day filled with seminars, a swap meet, lots of tire kickin' and Model A fellowship and stories. If you can't make it to the museum, be sure to get your A out and take it for a spin.

Membership renewals are beginning to come in. If you haven't sent in yours, please do so soon, and don't forget to include your email address on the form. You can also renew online, by [clicking here](#). As so many of you are enjoying the online edition of The Restorer, your membership now **includes** this added bonus. You will still receive your magazine through the USPS, but via your email, you will also receive a digital link for the online edition. To access, first you must be connected to the Internet, then you just click on the photo of the magazine cover. You will then be taken to a page for you to input your email address and your membership number - that's your password. The password must be 6 numbers in length. So, for example, if your membership number is 1234, you need to add a couple of 0's to the beginning, i.e., 001234.

It's hard to believe that it is time to start thinking about December and holiday greeting cards! We have a new card this year, depicting a family on a beautiful snowy moonlit evening, preparing to deliver packages in their Model A Sedan. It was the cover picture for The Restorer magazine's November/December 1974 issue, by Patti Reader. Order your set today, either through the [MAFCA store](#) or by calling the office, 562-697-2712.

The Board of Directors is dedicated to our membership and providing the best possible service to you. Please contact us with your ideas, concerns, complaints, and praise. I look forward to hearing from you. My email address is [president@mafca.com](mailto:president@mafca.com) and I can also be reached by phone, 803-622-0048.

### Information

The Model A Ford Club of America, Inc. (MAFCA) is a California non-profit corporation and a national historical society dedicated to the restoration and preservation of Model A Ford vehicles as manufactured from 1928 through 1931. MAFCA's members are dedicated to the restoration, preservation, and enjoyment of Ford vehicles of that era. MAFCA is the largest club in the world dedicated to one make of automobile. Volcano A members are urged to join the Model A Ford Club of America, Inc. Visit the MAFCA website for a membership application. Dues are \$40 yearly and include a subscription to The Restorer.

### Future MAFCA Events

#### **MAFCA National Awards Banquet**

2017 - Nov 29 - Dec 3 - Oklahoma City, OK  
Host: Sooner Model A Club of Oklahoma City

#### **MAFCA National Convention**

2018 - June 24-29 - Reno-Sparks, Nevada  
Host: Northern California Regional Group

### **Cleaning Gunk out of the Gas Tank**

"This was kind of an experiment for me but it worked out very well. I saw a video online about tank cleaning with electrolysis and thought it was interesting...so I tried it. I first power washed the tank with a Hotey to get the first layer off. It was pretty bad.



1) Dissolve washing soda (Walmart laundry detergent isle) 2oz / gallon of water in plastic 5g bucket.

2) With tank on ground, pour water into sending unit opening. Fill tank mix.

3) Put metal anode into sending filler opening. I made anode from 1/8"x 1" x 24" steel strap bent into S patterns to zig zag into tank.

4) important to make sure anode does not rest on any part of the tank when hooked up to battery charger. I cut a chunk of 3/4" plywood approx. 6"x6" to lay flat on top of tank. Then I screwed anode into plywood to hold it into place and hang in tank.

5) Clamp positive clamp of 30amp battery charger to anode, clamp neg to outside of tank to ground it.

6) Let charger run for 8 hours. It will generate some rusty/crusty gunk and it will collect onto anode.

7) Remove anode, clean it off with wire brush and repeat. (same water mix).

8) I did this process for approx. 24 hours.

9) Dump water and gunk out of tanks, rinse well with power washer. pour in a couple bottles of isopropyl heat (red bottle) to help remove remaining water. fan dry.

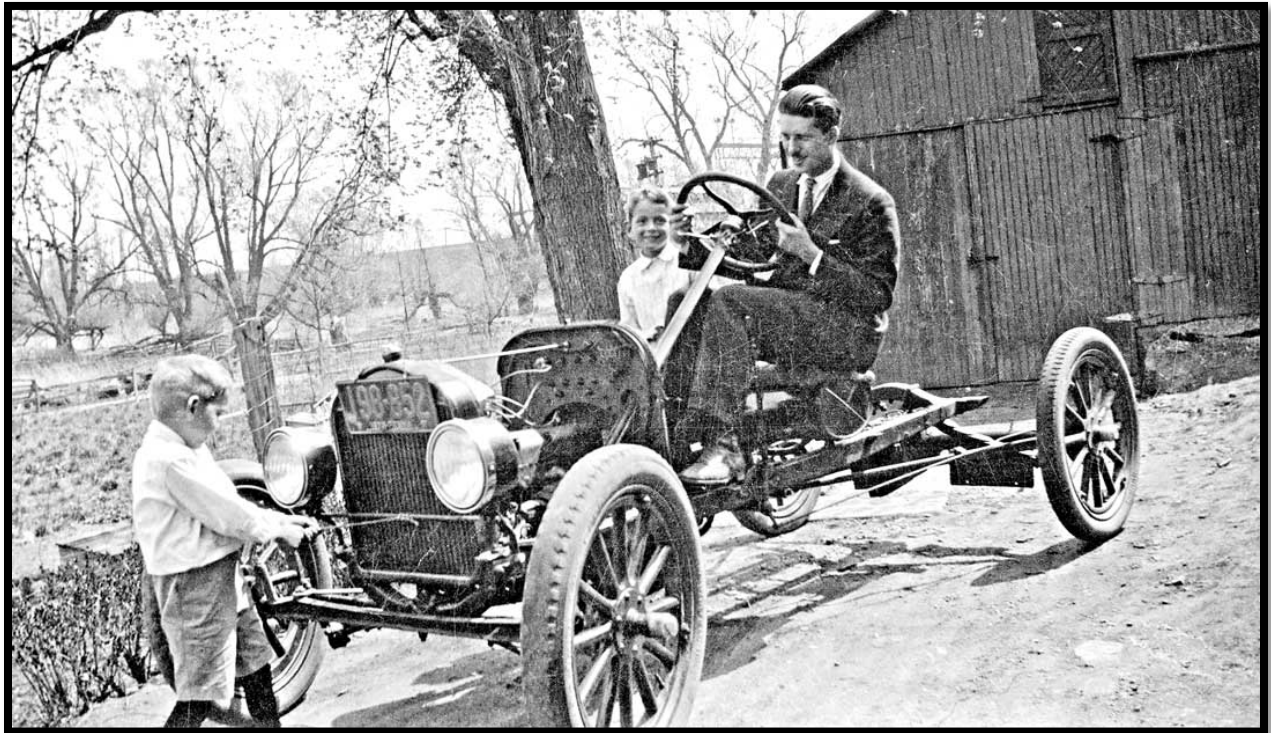
10) Install tank and put gas into tanks as soon as possible to deter bare metal in tank from rusting again.

Again, this was an experiment for me that worked pretty well. I have included a picture for you to see results.

Hope this helps and good luck."

*Compliments from Corley Wooldridge*

## *The Anatomy of a Model "T" Speedster: Spring, Summer and Fall*



The Model "T" Ford car, produced between the years of 1909 to 1927, when stripped down to a bare chassis, served as a perfect palette for an enthusiast to build a "gentleman's speed car," or racing machine in the teens to as late as the early-1930s. In this case, thanks to Lester Mommsen we have three photos of a "speedster" his grandfather assembled in Pennsylvania during the period.

The lead photo taken in the spring time of him and his sons with a stock Ford "T" chassis and running gear that he lowered four to five inches by using *Laurel Motors* brackets front and rear. It is also equipped with a set of "drum" style accessory headlights, and license plates and presumably it was test driven by him in this form.

Source: The Old Motor.com





## **For Sale Items or Wanted**

To place an "Ad" send your information to [rrusunen@comcast.net](mailto:rurunen@comcast.net), or call Bob Rusunen at 360-828-5317

### **For Sale**



Custom tandem axle car trailer w/ ramps. Has hitch brake that works well. Bearings repacked semi-recently. Tows really well. Always garaged. Needs paint job. Some denting on fenders and jack. Selling since hardly ever used. Sold in as-is condition. \$2000. Cash only. Reasonable offers considered.

Rick Boehm

360-247-5975 (leave message)

[rboehm@tds.net](mailto:rboehm@tds.net)

### **1930 Model A Deluxe Sport Roadster**



1930 Deluxe Sport Roadster. Older restoration still very nice. New brakes all around (Aug 2017). Good driver. \$25,000. Canadian. Call: 1-778-269-5166 (Ray)

### **Wanted**

A rebuildable 2 tooth steering box and 2- 17" ford wheels. Please contact Roger Green at [roger\\_o\\_green@yahoo.com](mailto:roger_o_green@yahoo.com).

## Support Our Club Suppliers

Benny Bennett Holly Bennett



4219 St. Johns Rd NE • Vancouver, WA 98661 • (360) 993-0284  
www.bennyspizzacafe.com

### C'S AUTO MACHINE SHOP

- FLYWHEEL GRINDING
- RESURFACING
- BORING
- THERMAL CLEANING
- ROD REBUILDING
- BLOCK DECKING
- VALVE GRINDING
- ENGINE REBUILDING
- KNURLING
- PIN FITTING
- PRESS WORK
- ROTORS & DRUMS

**JIM**  
**574-4934**

OPEN M-F, 8 am-6 pm  
800 NE 86th Street  
Vancouver, WA 98665

EDM  
SPECIALISTS IN  
REMOVING BROKEN TAPS,  
DRILLS, STUDS & EASY-OUTS

*We Save You Money* www.CostLessAutoParts.net

## Cost Less Auto Parts™

**"NO EXCUSES, Get it done!"**

<b>Orchards</b>	<b>Hazel Dell</b>	<b>Kelso</b>
360-254-5710	360-695-4423	360-353-5956

Amanda Uthe  
RustyLugParts.com

## Rusty Lugs Rod's & A's

Open: M-F 9am-5pm  
Formerly:  
Floyds Model A Parts

8021 NE 142nd Ave  
Vancouver, WA 98682  
p. 360-887-3346  
rustylugparts@gmail.com



**We Wish You  
A Merry Christmas**

## MAFCA Introduces 2017 Christmas Card

**Send Your Seasons Greetings  
To All Of Your Model A Friends**

**Box of 10 cards with envelopes  
Only \$14.95 + Shipping/Handling**

Order at [MAFCA.com](http://MAFCA.com)  
or  
call 866-379-3619

Check out all of our Holiday Cards  
at [MAFCA.com](http://MAFCA.com) or in the Sep/Oct issue  
of *The Restorer*



***Volcano View Newsletter***  
***Bob Rusunen, Editor/Webmaster***  
***3720 NW 116<sup>th</sup> Street***  
***Vancouver, WA 98685***



Source: MAFCA A of the Day