



www.volcanoas.net

Meeting: Church of the Nazarene – 16850 NE Fourth Plain Blvd, Vancouver, WA - Second Monday of Month – 7:00 PM

Volume 1 Issue 10

October

2012

Happy Halloween



1931 Slant Window Fordor Sedan

2012 OFFICERS & BOARD MEMBERS

President: Jerry Lane

360-263-6980

Vice President: Lynn Sondenaa

503-668-6770

Treasurer: Bill Peden

360-260-9887

Secretary: Patty Sondenaa

503-668-6770

Member at Large: Leonard Willey

360-687-0916

Past President: Jack Dusenberry

360-256-0149

Editor: Bob Rusunen

360-828-5317

COMMITTEE CHAIRS

Web Master: Bob Rusunen

NW Regional Rep:

Jack Dusenberry

Refreshments Coordinator:

Dian Lane

Tour Director: Lynn Sondenaa

Library/Historian: Linda Willey

Sunshine: Pat Dusenberry

Community Service Director:

Sherry Rusunen

Garage Workshop: Tom Pagel

Public Relations: Don LaBarre



President's Note

September 25, 2012

With fall upon us and winter just around the corner, this would be a good time to reflect upon all the great events of the past year, meetings, seminars, tours, regional, breakfasts and many other events. These activities require many hours of preparation and planning, so consider volunteering and participating would be a great opportunity to join in on the good times.

Last Saturday Dian & I hosted our yearly picnic and greatly enjoyed everyone's participation. We had twenty couples come out for a nice sunny day with potluck food that was delicious. Thanks to everyone.

Jerry



Happy Halloween!



Front Page Photo

This is John & Diana Carlile's 1931 Slant Window Fordor on the way to the Regional Meet in Boise, Id.

VOLCANO A'S GENERAL MEMBERSHIP MEETING

September 10, 2012

CALL TO ORDER/FLAG SALUTE: 7:08 pm by Jerry Lane.

TREASURER REPORT: Given by Bill Peden.

GUESTS/NEW MEMBERS: Scott and Lisa Dean are new members. They have a fordor sedan. Rod Rice has a 28 truck and is a new member. Rayburn Mitchell introduced his guests: Jarrod Wickum and Pat Cline.

SECRETARY: Patty Sondenaa had nothing new to report.

VICE PRESIDENT: Lynn Sondenaa reviewed upcoming tours:

Sept. 15 is the Trillium Lake tour. Due to 75th anniversary festivities at Timberline Lodge, we will tour to Cooper Spur on the east side of Mt. Hood and have lunch there before touring on to Hood River. Meet at 9:00am at the Home Depot on the Portland side of the I-205 bridge, with a departure time of 9:15am.

Sept. 22 is the picnic at Lanes' Museum. The time has been changed to 12 noon with games before the potluck lunch.

Oct. 27 is the corn maze.

LIBRARIAN: Linda Willey was absent.

WEBMASTER/EDITOR: Bob Rusunen apologized for the flier sent out with the newsletter which he said was in violation of club bylaws.

KITCHEN: Dian Lane said that she needs someone to do the November refreshments for Ardis Collins who is having hip replacement surgery. Anyone willing to do so should contact Dian.

REFRESHMENTS: Dian Lane served cookies, grapes, apple cider and coffee.

COMMUNITY SERVICE: Sherry Rusunen said 67 $\frac{1}{2}$ lbs. of food was collected in August. The collection bucket will be at the picnic. We are still aiming for 2000 lbs.

The club will be going to Bedford Inn Retirement Center at 13303 SE McGillivray on Wednesday September 12th. We will leave at 9:00 am, following breakfast at Benny's.

SUNSHINE: Pat Dusenberry reported that Helen Deredorf passed away.

Deon Schroeder said that Ginny Bay is going to have throat surgery.

MEMBER-AT-LARGE: Leonard Willey was absent.

PUBLIC RELATIONS: Don LaBarre said he will have an article in to The Restorer by the 20th.

SEMINAR: Lynn Sondenaa will present the second part of restoring the gas tank.

OLD BUSINESS: Jerry Lane asked for approval of the August minutes. Bill Peden moved and Tim Woodman seconded. The minutes were approved.

Jerry said they had a good time judging at the La Center Cruise In and Car Show. The club made \$100.00.

Dian Lane suggested that next year the club should run a coffee stand from 7:30am until 11:00am as a fund raiser at the La Center Cruise In and Car Show along with doing the car judging. It would cost \$30.00 for the space. Dian has the necessary food handler's permit and will fill out the necessary paperwork. The club approved the idea.

NEW BUSINESS: Jerry Lane made the following announcements:

The Albany Swap Meet will open at 8:00am on Saturday, Nov. 17th at the Linn County Expo. It is put on by the Enduring A's and has a \$5.00 entry fee.

Goldendale Motorsports Association is sponsoring Concours de Maryhill Loops on Saturday, Oct. 6 from 10:00am until 4:00pm. Registration costs \$15.00.

Fletcher Anderson and Rod Rice have a DVD of the June 16th picnic available for those interested.

Tillamook County Pioneer Museum sent a thank you to the club for visiting their museum.

La Center Cruise In sent a thank you for judging and an invitation to judge again next year.

Dian Lane asked members to bring freshly cut flowers for table decorations to the picnic Sept. 22nd at the Lanes' Museum.

They will be barbecuing hamburgers and sausages. Everything else is potluck. The picnic will start at noon.

She also said that the ladies will meet at 10:30am on Saturday, Oct. 20th, at the Amboy Museum, for *Babies in Need*. Potluck lunch will begin at 11:30am. Bring unwrapped baby clothes.

Roberta Emerick had pictures from the La Center parade for members to look at.

RAFFLES: Marlin Binder won \$27.00 in the 50/50 drawing. (The club received the other half of the pot.) Wayne Thompson won the other raffle, choosing the lady's gift for Arleta.

ADJOURN: Jerry Lane adjourned the meeting at 7:40pm with refreshments and seminar following.

Respectively Submitted by Patty Sondenaa, Secretary

Activities and Tours

October Birthdays

1 Lynn Mattingley
9 Dian Lane
16 Jennie Ryan
17 Kathy Neilsen
26 Diana Carlile
27 Karel Wilkerson
28 Fred Holm
30 LeRoy Heyler
31 Jane Hall

2012 Refreshments

October MJ Peden, Louise Berg
November Ardis Collins,
Roberta Emerick
December Holiday Potluck

Welcome New Members

Scott & Lisa Deane 360-263-6099
2307 NE344th Circle
La center, WA 98629
1930 Fordor

Roderick Rice 360-740-4834
1354 pleasant Valley Rd
Chehalis, WA 98532
1928 "A" Truck

The Food Keeps Coming In

The food collected at our Sept. 10th meeting was 87#s!! That brings our total for the year to 1255#s!!!! We only need 750 more pounds to go over 2000#s!!! If you forget your donation at the meeting, feel free to stop by the house and drop it off or bring it to any club excursion!! I will take food whenever you remember!!! We can do this!! When I dropped the food off at the food bank this time, they were thrilled to get the case of Top Roman. Many of you ask what they really need; they will accept all donations, but do plead for tuna and peanut butter as well as the Top Roman. Thank you all so much for your generosity!!

Volcano A's 2012 Tours

By Lynn & Patty Sondenaa

October 27th

Corn Maze

November 10

Veterans Day Parade

December 15th

Chelatchic Prairie Christmas Train



Lava Ladies

Our 5th annual Babies in Need potluck will be October 20th at the Amboy Museum. At this event we bring new layette items that we donate to Babies in Need who help babies & Mom's that otherwise wouldn't go home from the hospital with much needed baby clothes. When we started this tradition we thought it would be fun to treat it like a Baby Shower where we share a meal and get to see all of the cute little outfits everyone brings. So please bring a potluck dish and baby items and we'll enjoy sharing our bounty with others while also enjoying the friendship of our group.

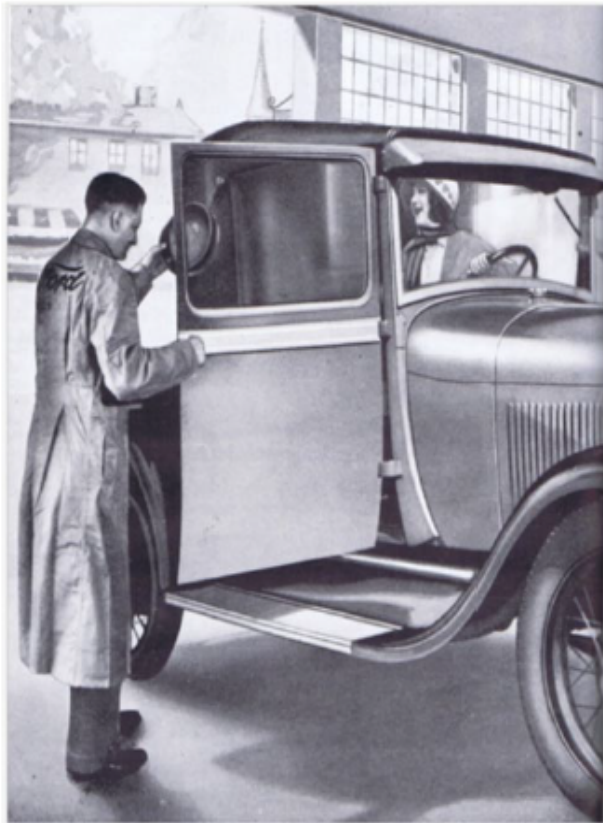
ERA Fashions

SERVICE STATION ATTIRE IN THE MODEL A ERA

By Lois Przywitowski

In the early years of the automobile, getting gas for the horseless carriage was no small feat. Dispensing gasoline evolved from bulk depots on the outskirts of towns, often requiring three people to fill the tank, to curb side pumps. As the popularity of the motor car increased and technology allowed larger quantities of fuel to be refined from the same amount of petroleum, merchants of all stripes, from bicycle shops, general stores, garages, and automotive dealers, installed gas pumps in front of their establishments. By 1920 approximately 15,000 gas stations were located in the United States. They were rudimentary at best, some little more than shacks, with advertisements littering their walls and the roads leading to them. They were considered by many to be an eyesore, and even worse, there was little confidence in the product they offered.

Major oil companies took note and began to standardize their stations, making them visually appealing to the motorist. Not only did the station need to look good, the service employees needed to project honesty, integrity, reliability and quality. What better way to do that than through the clothing they wore?



Ford Service Bulletins emphasized service, shop cleanliness, and the appearance of the employees. This illustration, from the July 1928 Bulletin, shows the serviceman in a shop coat, with the Ford Logo, shoes polished, and cap in hand.

Community Service at Bridgewood and the Bedford

On Wednesday Aug. 22nd a group of us made our way to the Bridgewood Retirement Center to share our cars and company with the residents. It was an enjoyable time talking with them and listening to their stories of long ago when they rode in a "new" Model A or learned to drive in one! Those attending were Lynn & Jack Mattingley, Pat & Jack Dusenberry, Ron & Jane Hall, Carma & Bob Huset, Don & Dee LaBarre, Richard & Sandra Pargman, Linda & Leonard Willey, Tom Ryan, Jerry Lane, Mike Blick, Wayne Thompson, Don & Pat Samec, and Bob & Sherry Rusunen.

Then on Wednesday, Sept. 12, we spent a lovely sunny morning at the Bedford Inn Retirement Home sharing our cars with the residents. We started the day at Benny's for breakfast and then had a short trip over to the inn. Club members who shared their cars and time were: Jack & Lynn Mattingley, Jack & Pat Dusenberry, Bob & Carma Huset, Ron & Jane Hall, Corley & Nancy Wooldridge, Mike Blick, Jerry Lane, Dennis VanEngen, Tom Ryan, Wayne Thompson, Don LaBarre and Bob & Sherry Rusunen. We had a great showing of 10 cars at each Center!! Thanks to all for sharing!!





LAVA LADIES AUTUMN TEA

The Lava Ladies spent a most enjoyable Friday at Myrtle's Tea House in Ridgefield. Our theme was an autumn celebration, so our table decorations were full of yellows, reds, oranges, and browns. Leaves and small gourds were strewn across the table. Tablecloth was covered with a sparkling sheer yellow net with a centerpiece of a ball of autumn flowers and leaves.

All the ladies received a leaf-shaped candle holder with a tea candle as well as white chocolates in yellow and orange colors. We were provided with a 4-course tea starting with a mango sorbet; followed by a choice of soup; 8-10 tea sandwiches and other savories; and last a dessert plate with a hot scone and 3 other desserts.

We enjoyed walking through and purchasing small items from Myrtle's gift shop. Lively conversation and friendship closeness was shared by all. Attendees included: Sandra Pargman, Alicia Erickson, Pamela Pemberton (guest), Sherry Rusunen, Marilyn Elvestrom, Carma Huset, Dee LaBarre, Lynn Mattingley, Pat Dusenberry, Marlene Thompson, and Dian Lane.

Submitted by: Sandra Pargman



Trillium Lake & Cooper Spur Tour

September 15th 2012 by Lynn Sondenaa

Our tour day was greeted by great sunny, warm weather! We had five Model A's and two modern iron. Our participants were: Lynn & Patty, Jack & Lynn, Bob & Sherry, Corley & Nancy, Jack & Pat, Rayburn Mitchell, Leonard & Linda, Deon & Diane with their friends Glen & Nancy Thornton.

First a special thank you to Diane who is recovering from back surgery. She is a real trooper to endure our trip into the wild! Patty and I had to look long and hard to find dirt and gravel road into Trillium Lake, as we had a special request from Mr. Mattingley to get off the clean, beaten path. We stopped on the dam for great pictures of the Model A's with the backdrop of the lake and Mount Hood. We then toured around to the opposite side of the lake where the Oregon Trail grazing meadow is located, along with the 1882 pioneer women's grave. Then, it was off to Copper Spur Inn & Resort for a fine lunch. We took the back road after lunch into the small town of Mt. Hood.

This was a great tour with beautiful views of the mountain, trees, streams, and great fresh smells. Why we even worked our way through a pile of hay that a truck dumped on Highway 26. Our tour took us 160 miles.



Picnic Pictures at the Lanes



Technical Notes

Brake Adjusting Shaft Information

By Lynn Sondenaa

These special clevis clamps (A-2042) are mounted to each brake shoe on both the front and rear brake systems. These rest against the brake adjusting wedge (A-2041). Figure 1 shows the adjusting shaft, wedge and how they fit together. It is critical that both brake adjusting shafts within a brake assembly be the same length. Figure 2 shows incorrect lengths with the tool used to set angle and length of the arms. If they are not the same length the shoes will not be centered in the brake drum. All of the force will then be placed on one brake shoe.

The original brake adjusting shafts were heat treated so they are hardened steel. To change the length they should be ground as they are the same hardness of a file. In my experience I have found that the USA made adjusting shafts and wedges are heat treated. I have found that the units made in China and Taiwan may not be correctly hardened, and can be hand filed. They also wear out very fast.

Ford specifications state that both the adjusting shaft and the wedge were at an angle of 60 degrees. Figure 3 shows an arm and a protractor set at 60 degrees. A simple tool can be made to use with the arms so the correct angle and length can be measured. I used a piece of 1 inch flat bar $3\frac{3}{4}$ inches long, $\frac{3}{16}$ inches thick. I drilled a hole in one end and pressed an old adjusting shaft pin into it, on the other end, $\frac{5}{8}$ of an inch from the end I drilled a #7 hole, and tapped it $\frac{1}{4}$ -20. I then used a piece of 1 inch flat bar 4 inches long by $\frac{1}{8}$ inch thick. I bent it to 60 degree angle and made a $\frac{1}{4}$ inch wide slot by 1 inch in length. The tool was put together using a brass $\frac{1}{2}$ round head screw a length of $\frac{3}{4}$ inches. I also used a brass wing nut for easy adjustment. Figure 4 also shows the brake arm tool with an adjusting arm in the tool.

In conclusion, be sure that the arms are the same length in each brake unit. Check that the angle is ground to 60 degrees. Also check to see that the head of the adjusting shaft pin is towards the backing plate and the cotter keys that hold the arms to the brake shoe point out towards the brake drum; otherwise they will rub against the backing plate.



Fig 1



Fig 2




Fig 3



Fig 4

Classifieds



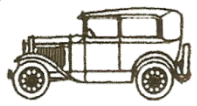
TEAM PEDEN

METAL CLEANING
Soda, Sand, and
Glass Blasting

Bill & MJ Peden
(360) 260-9887 Office
(360) 989-5157 Cell
bill@peden.ws

14507 NE 249th Ave
Brush Prairie, WA 98606

Floyd's Model "A" Parts



Floyd & Janet Mickel
Owners

Phone: (360) 887-3346
1-800-852-2606
floyds@WA-net.com

29500 NW 31st Ave
Ridgefield, WA 98642



**NorthWest
AUTO PAINT
SUPPLIES, INC.**

SCOTT BUSH
Vice President

9518 N.E. COVINGTON ROAD
VANCOUVER, WASHINGTON 98662

CELL (360) 772-4599
BUS. (360) 254-0211
FAX (360) 254-6937

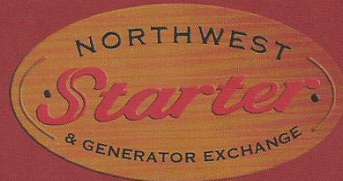
C'S AUTO MACHINE SHOP

- FLYWHEEL GRINDING
- RESURFACING
- BORING
- THERMAL CLEANING
- ROD REBUILDING
- BLOCK DECKING
- VALVE GRINDING
- ENGINE REBUILDING
- KNURLING
- PIN FITTING
- PRESS WORK
- ROTORS & DRUMS

JIM
574-4934

OPEN M-F, 8am-6pm
800 NE 86th Street
Vancouver, WA 98665

EDM
SPECIALISTS IN
REMOVING BROKEN TAPS,
DRILLS, STUDS & EASY-OUTS



Trace Phillis

www.nwstarter.com | 360.573.8278

12209 NE FOURTH PLAIN ROAD, SUITE E | VANCOUVER, WA 98682



Glenn Miller

2735 N.E. Andresen Road Vancouver, WA 98661
360.254.0555 • fax 360.254.0353
glenn@maaco1952.com • www.vancouver.maaco.com



**Orchards
muffler**

10602 4th Plain Rd. • Vancouver, WA 98682
360.892.8420

Rick Kaldenberg Tony Ferguson

WHOLESALE FLEET



KEN HEARD
(360) 256-7985
(503) 252-5505
FAX (360) 256-7465

5813 NE 127TH AVE. #200
VANCOUVER, WA 98682

Classifieds (Con't)

Benny Bennett Holly Bennett



4219 St. Johns Rd NE • Vancouver, WA 98661 • (360) 993-0284
www.bennyspizzacafe.com

WE SAVE YOU MONEY!

Cost Less Auto Parts, Inc.

www.CostLessAutoParts.net

"New" Orchards location 10507 NE 53rd St. Vancouver, WA 254-4833	Hazel Dell 7515 NE Hwy 99 Vancouver, WA 695-4423
--	--

We've Revolutionized the way you find Model A Parts!

FOUR CATALOGS TO CHOOSE FROM:

- Coupe • Pickup • Open Car • Sedan

CALL & ORDER YOUR FREE CATALOG TODAY

AND ASK ABOUT OUR MONTHLY SPECIAL!

1-888-879-6453

www.mikes-afordable.com



RICK PEABODY PRESIDENT	TIM TOPPER MANAGER
---------------------------	-----------------------

WILSON RADIATOR SERVICE

AUTO • TRUCK • INDUSTRIAL

"WE CAN HANDLE IT"

1612 LINCOLN AVE. VANCOUVER, WA 98660	(360) 693-8971 (503) 224-7960 (360) 425-1583 1 (888) 693-8971
--	--

For Sale Items

FOR SALE, \$12,000 or best offer!! Late 1931 Model A Pickup. All original, sound body, all good wood, Steel roof, engine gone over mechanically, Great running pickup, could be a daily driver, Good Title, Clean inside and out. Everything is in good condition. It has been stored in a barn for many years. Pictures taken when first removed from the barn. Only serious buyers, please!! Cash Only!! Located in Vancouver, WA. If you are interested, please call 360-907-3566 for more information or to see the pickup.



Volcano View Newsletter
Bob Rusunen, Editor/Webmaster
3720 NW 116th Street
Vancouver, WA 98685

