



**Volcano A's, PO Box 970, La Center, WA 98629**

[www.volcanoas.net](http://www.volcanoas.net)

Meeting: Church of the Nazarene - 16850 NE Fourth Plain Blvd, Vancouver, WA - Second Monday of Month - 7:00 PM

Guys breakfast meeting every Wed. (7:00am) at Hockinson Café, 219 NW 20<sup>th</sup> Ave, Suite 100, Battle Ground, WA

Guys lunch on Fridays (11:30 am) at Benny's Pizza & Café on 4219 St Johns Rd NE, Vancouver, WA

**Volume 5 Issue 11**

**November**

**2016**

*2015 MAFCA Newsletter Certificate of Merit*

*2015 MAFCA Website of the Year*

*2013 MAFCA Newsletter of the Year 2013 MAFCA Website of the Year*

### **2016 Club Officers**

**President:**

Jerry Lane - 360-263-6980

[northforkmuseum@gmail.com](mailto:northforkmuseum@gmail.com)

**Vice President:**

Lynn Mattingley - 503-753-1363

[lynnmattingley@aol.com](mailto:lynnmattingley@aol.com)

**Treasurer:**

Linda Willey - 360 687-0916

[lindawilley@mac.com](mailto:lindawilley@mac.com)

**Secretary:**

Sherry Rusunen - 360-828-5317

[rrusunen@comcast.net](mailto:rrusunen@comcast.net)

**Member at Large:**

Leonard Willey - 360-687-0916

[lindawilley@mac.com](mailto:lindawilley@mac.com)

**Past President:**

Jack Dusenberry - 360-256-0149

[jdsie@comcast.net](mailto:jdsie@comcast.net)

**Editor/Webmaster:**

Bob Rusunen - 360-828-5317

[rrusunen@comcast.net](mailto:rrusunen@comcast.net)

\*\*\*\*\*

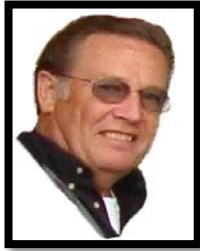
Articles and contributions are encouraged and may be used as space permits. The deadline for all articles is the 20th of the preceding month. The Volcano View is a monthly publication of the Volcano A's Chapter - MAFCA E-mail all proposed articles to: [rrusunen@comcast.net](mailto:rrusunen@comcast.net).

### **Photo of Month**

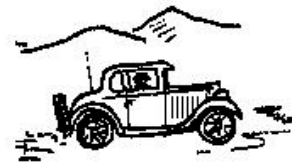


### **President's Tour**





***President's Note***  
***October 24, 2016***



This last Saturday we enjoyed a very memorable memorial for Diane Schroeder, she was a great lady and will be greatly missed by everyone who knew her. We wish Deon, family and friends peace in their hearts knowing Diane passed too young but touched many lives while she was here.

Our driving season is approaching the slow time of the year, however the Model A's enjoy a little exercise now and then to keep the joints from becoming squeaky and stiff, as we sometimes experience.

The Veteran's Day Parade is coming up Saturday, November 5<sup>th</sup> and we will meet in front of Bader's Wine Supply Store at 711 Grand Blvd. Meet at 9:15 AM and leave at 9:30 AM

**Jerry**

---

**Committee Chairs**

**Community Service:** Joyce Swartz/Tom Ryan

**Garage Workshop:** Tom Pagel

**Library/Historian:** Terry Findley

**NW Regional Rep:** Jack Dusenberry

**Public Relations:** Dian Lane

**Refreshments Coordinator:** Nancy Wooldridge

**Sunshine:** Pat Dusenberry

**Tour Director:** Lynn Mattingley



**Front Page Photo**

Club members parked for a stop and photo during the recent President's Tour to the coast.

**Knowledge Nugget**

In 1930, emigration from the U.S. exceeded immigration to the U.S. for first time ever.

## **Volcano A's General Membership Meeting Minutes**

### **October 10, 2016**

**CALL TO ORDER:** 7:00 pm by President Jerry Lane.

**TOURS:** Lynn Mattingley reminded everyone of the tour this Sat. Oct. 15<sup>th</sup> to the Antique Powerland Museum in Brooks OR. Meet at ODOT on Jantzen Beach at 9:00, leaving at 9:15. Lunch will follow! Come enjoy the fun.

**TREASURER:** Linda Willey gave the financial report.

**EDITOR/WEBMASTER:** Bob Rusunen reported the info in the last newsletter for Ginny Bay was incorrect. He will try to update that at the next meeting. Also, there is a correction on the date of the next tour. It is Sat. Oct. 15<sup>th</sup>. License plate toppers are still available, but not many left. Don't wait!!

**LIBRARIAN:** Terry Findley announced a new book has been added to our library: 4 Bangers! & Me by Jim Brierley. Feel free to check it out!

**COMMUNITY SERVICE:** Joyce Swartz announced we collected 133 #'s of food in Sept. bringing our year's total to **3825 #'s!!** Outstanding!! Gary Swartz said the Food Bank is having a Roaring 20's fund raiser on Sat. Oct. 22<sup>nd</sup> at the Battle Ground Community Center at 5:30. All are welcome!!

**SUNSHINE:** Funeral services for Diane Schroeder is Sat. Oct 22<sup>nd</sup> at the Glenwood Community Church at 12201 NE. 72<sup>nd</sup> Ave. at 11:00. Please drive your Model A! Dickson Lee is still very ill.

**LAVA LADIES:** Dian Lane said the Dec. meeting will be at 6 PM on the 12<sup>th</sup> & will be our annual Christmas potluck and auction!! A signup sheet will be at the next meeting for food assignment. The Babies In Need luncheon was a huge success on Sat. Oct. 8<sup>th</sup>. Fun was had by all including the Beaver Babes who joined us!!

**OLD BUSINESS:** The seminar tonight will be a DVD on how to top a Model A. Dian Lane asked for any input for the Restorer. Jerry reminded us about the Regionals next June in Coos Bay. You can now make hotel reservations and register for the event. Jerry said the President's Tour was great fun!! A thank you note will be written to Doug & Janet Rice for their hosting the tour of the Running Anvil Carriage House. The minutes were approved and seconded by Jack Dusenberry and Linda Willey.

**NEW BUSINESS:** Nov. 5<sup>th</sup> will be the Veteran's Day parade. Meet at Baders at 711 Grand at 9:30. Jack Dusenberry announced that elections are coming up next meeting. Please consider running!! Bob Rusunen announced the pictures will be ready to pick the ones for our 2017 calendar at the next meeting.

**RAFFLE:** Austin Alling won \$38.00.

**REFRESHMENTS:** Becky Blick and Diane Earnest served Vegies, cheese, crackers, sweet bread and candy!!

**ADJOURNED:** Meeting was adjourned by Jerry Lane.

Submitted by Sherry Rusunen

## **Member Celebrations**

### **Anniversary**

11 Roger & Kathy Green

### **Happy Birthdays**

4 Sandra Pargman

6 Terry Findley

6 Joyce Swartz

7 Leonard Willey

11 Pat Dusenberry

11 Tim Woodman

12 Jens Nielsen

14 Sandy Helyer

16 Tom Ryan

19 Don LaBarre

30 Deon Schroeder

## **Refreshments**

**November:** Roberta Emerick &  
Marylan Kelly

**December:** Holiday Potluck @ Lane's

## **Future Events**

**Dec 12** Christmas Dinner & Auction  
at the Lane's Museum

## **Tours**

**Nov 5** Ft. Vancouver Veteran's  
Day Parade, Vancouver, WA

## **Factory Photo of the Month**



1929 40 A Standard Roadster

## **2017 Club Calendar Pictures**

Please help select photos for the 2017 Club calendar at the November meeting. Photos will be available for review and month selection.

## **Daylight Saving Time Ends** **November 6th**





## 2017 Club Membership Dues

They are due by the December Club Meeting. Please make payment at or before the December meeting or send your check for \$20 to:

Volcano A's  
PO Box 970  
La Center, WA 98629

**Remember to attend the  
November Club meeting  
to vote for new 2017  
Club Officers**



Note: Periodically some materials printed in our newsletter may have been borrowed from other club newsletters. We thank other clubs for sharing their newsletters with the Volcano A's. Also, when sources are known they will be included.

## Veterans Day November 11th

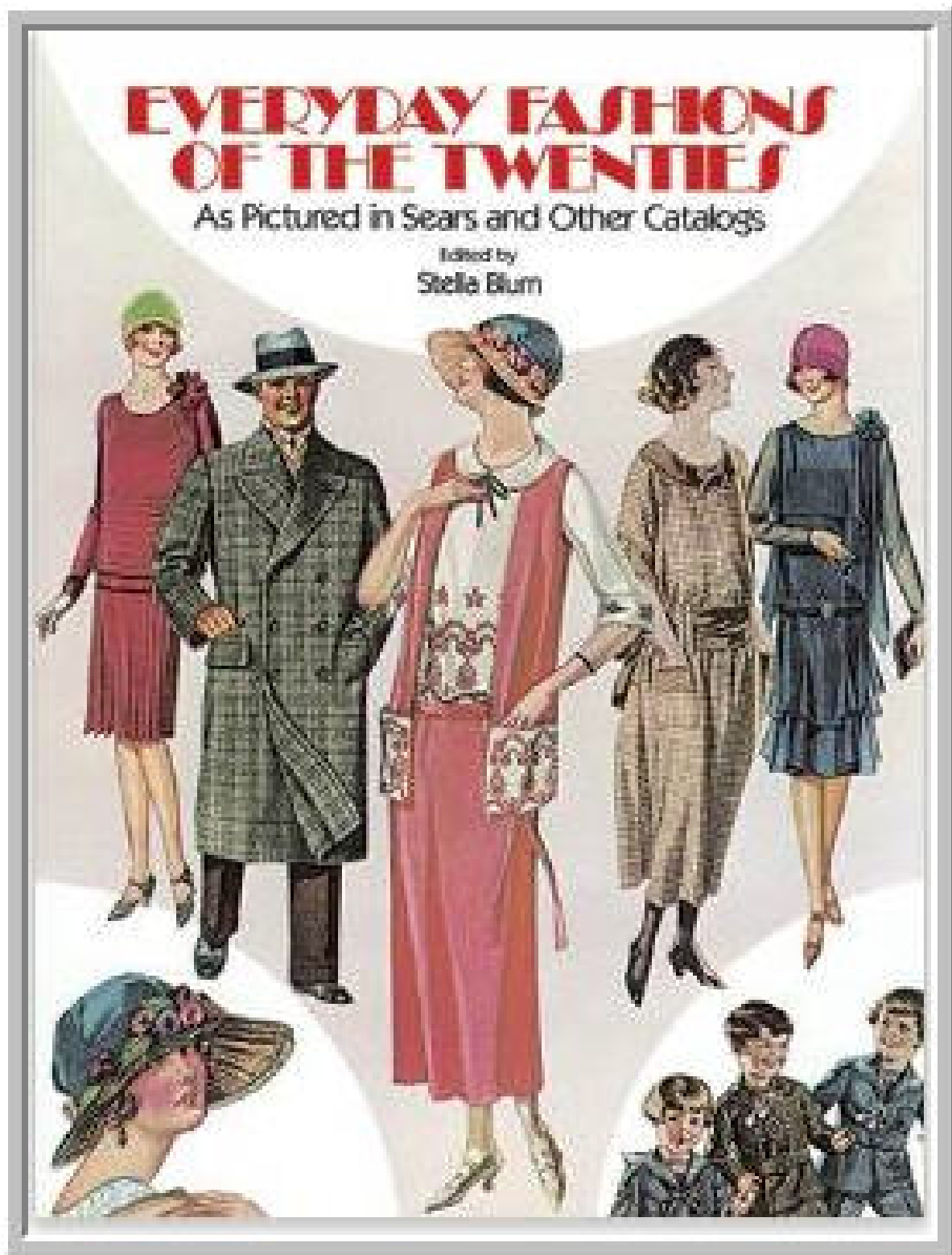


Memorial Service  
Saturday, October 22, 2016



Diane Marie Schroeder  
June 27, 1934 ~ September 16, 2016

*Model A ERA Clothing Fashions*



Source: Phillip Lenssen at [vintageadbrowser.com](http://vintageadbrowser.com)

## Ford Advertisement

# SERVING BROADER FIELDS

*a new light-express body extends the usefulness of Ford Trucks*



The Light-Express Body equipped with Canvas Top. A type widely used by hucksters, vendors, grocers and others, for newspaper and magazine deliveries, and for many other purposes. Made of steel, except for floor-boards and sills, which are of specially seasoned wood. The steel end-gate is equipped with heavy chains. Screen sides can be supplied.

A GROWING number of standard Ford bodies is being made available. Almost daily, they are extending Ford economy to new business fields.

Among these bodies are stake, panel, platform, express and agricultural types, five different dump and four different coal bodies, two police patrols, a funeral coach, an ambulance, a garbage truck, an ice body, and others. With a wide range of choice in style and equipment, they comprise a full line of more than fifty types.

These include trucks, sold complete by all Ford dealers, which have been specifically designed for the requirements of every business. All can be supplied in any color-combination desired.

Ford chassis, too, offer a type for every need. The light-delivery car uses the same chassis as the Model A Ford car. The 1½-ton truck chassis is available with 131½-inch or 157-inch wheelbase. It may be equipped with

single or dual rear-wheels, and with high or low rear-axle gear-ratios.

Into the building of both chassis and bodies go fine materials — each selected for

its purpose because it has those qualities of strength, toughness, hardness or flexibility which will serve best in that particular capacity. For example, in the making of the chassis alone, forty different kinds of steel are used.

This is but one example of the value that has been built into it. Others are precision workmanship, and the use of more than twenty ball and roller bearings. These and other features result in completed commercial units that give long, reliable service, capable performance and economy, offering to every business a specialized hauling service at low cost.

Your Ford dealer can supply a chassis and body that are designed for your hauling needs. In New York, Philadelphia, Boston, Detroit, Dallas, and Los Angeles, there are factory exhibits of Ford trucks and light-delivery cars.

### FEATURES

#### of Ford Commercial Units

Four-cylinder, 40-horse-power engine. Torque-tube drive. Internal-expanding mechanical brakes, all fully enclosed. Forty different kinds of steels for specific purposes. Extensive use of first steel forgings. More than 20 ball and roller bearings. Three different wheelbases. Two different chassis. Triple dust-proof windshields. Low first cost. Low cost of operation and maintenance. Reliability and long life. You may purchase a Ford truck or light commercial car on convenient, economical terms through the Authorized Ford Finance Plans of the Universal Credit Company.





## Greenville Village and Henry Ford Museum



Ford Motor Company first factory



Wright Brother's bicycle shop

The Edison Institute illustrates Henry Ford's personal commitment to preserving the record of America's technological and cultural progress. The success of the Model T allowed Ford to pursue a number of avocations. Particularly interested in the nation's past, by 1920 Ford was determined to start a museum that would emphasize industrial history and thereby "give people a true picture of the development of the country." Ford had decided that the best way to create this picture would be in two parts. An exhibit hall would display inventions and artifacts that recorded man's technological and cultural progress, while an adjacent outdoor village of residential, commercial, and industrial architecture would show how those objects were made and used. He named the entire complex after Thomas Edison, who had encouraged Ford when he was developing his automobile and who embodied, the carmaker believed, practical genius. Opening in 1933, the museum included many items from Ford's collection, from automobiles to player pianos, from steam engines to grease pumps. Ford also built some new structures for the collection of buildings he named Greenfield Village, most notably a replica of Independence Hall that was located at the entrance of the complex. Many of the village's nearly 100 buildings, however, had been moved from their original locations. Reflecting Ford's ideas about the crucial events of history, the 255 acres of grounds included Edison's Menlo Park laboratory, the shop where the Wright Brothers built their plane, and Ford's childhood home and early workplaces -- all reflecting Ford's view of what was important in history. Removing buildings from their original settings proved increasingly controversial as the years passed, but Greenfield Village was a model for the development of other outdoor museums. Today more than one million visitors a year come to the [Edison Institute](#), learning about American history, as well as the views of Henry Ford.

Source: Fordmotorhistory.com





## Tech Q&A - Tips from MAFCA Members

### DETERGENT VS. NON-DETERGENT OIL

**Question:** I am changing the oil in a Model A. I don't know what type of oil was used before. I have seen your tech answer saying the SAE 30 detergent oil is appropriate and desirable if the engine is clean. What about my situation. Can I replace the oil with detergent oil even if I don't know what was used before without cleaning out the oil pan and oil pump? What are the consequences? just smoky exhaust? And what about using a 20W-50 high detergent oil? Thanks. -- **B. Cassels**

**Answer:** Any detergent oil will work OK. If your engine has been using a non detergent oil for a long period of time, there will be deposit buildup around the rings, valves, and cylinders, etc. Many times, the wear in the engine parts is taken up by these oil deposits left in the engine. This is OK until you go to a detergent oil. After a couple of oil changes you will wind up with a real clean engine and the deposits that were taking up some of the wear space is now gone so expect to start using more oil. This will only be noticeable if the engine has a lot of miles on it and sufficient wear. I would think 20-50 would be OK. You should change every 500 miles. Maybe sooner the first time if you are not sure what was previously used. Hope it works for you. -- **Les Andrews**, Technical Director

MAFCA Tech Q & A -Lubrication Tips

<u>Information</u>	<u>Future MAFCA Events</u>
<p>The <b>Model A Ford Club of America, Inc. (MAFCA)</b> is a California non-profit corporation and a national historical society dedicated to the restoration and preservation of Model A Ford vehicles as manufactured from 1928 through 1931.</p> <p>MAFCA's members are dedicated to the restoration, preservation, and enjoyment of Ford vehicles of that era. MAFCA is the largest club in the world dedicated to one make of automobile. Volcano A members are urged to join the Model A Ford Club of America, Inc. Visit the MAFCA website for a membership application. Dues are \$40 yearly and include a subscription to <u><b>The Restorer</b></u>.</p>	<p><b>MAFCA National Awards Banquet</b> 2016 - Dec 5-8 - Reno, Nevada Hosts: Sagebrush Chapter</p> <p><b>Central CA Regional Group Jamboree</b> 2017 - March 24-25 - Porterville, California Host: Happy Hookers Chapter</p> <p><b>Northern California Regional Group Roundup</b> 2017 - May 16-20 - Lodi, California Host: Hub Tour</p> <p><b>Northwest Regional Group Meet</b> 2017 - Jun 22-24, Coos Bay, Oregon Host: Myrtlewood A's</p> <p><b>MAFCA National Convention</b> 2018 - June 24-29 - Reno-Sparks, Nevada Host: Northern California Regional Group</p>



Header from the MAFCA Website

## MAFCA President's Page - Alex Janke - September 2016



The Board of Directors had a very successful meeting in Michigan. Our advertising policy was streamlined and a new driving program was adopted for 2017. Watch The Restorer and MAFCA updates for "100,000 Miles in a Day." I know you and your chapter will want to join in the fun.

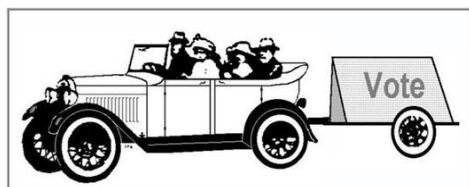
The Board also attended Model A Day at the Model A Museum in Hickory Corners. We gained almost 70 new members and spread the word about MAFCA. The Model A Ford Foundation, Inc. (MAFFI) has done an amazing job with the museum, new exhibits, and constantly expanding information is available to all visitors. It started off with a little rain but soon cleared up and turned into a gorgeous day. Approximately 500 people and 150 Model A's were in attendance for the swap meet, seminars, and viewing the museums at the Gilmore. Four new inductees to the Model A Hall of Fame were announced including Art Miller, one of the founders of MAFCA. The others inducted were Clarence Avery, William Hall, and Kirke R. Wilson (K.R. Wilson).

If you are not already a member of MAFFI, I urge you to look at their website (<http://www.maffi.org/index.htm>) and join. This is a not-for-profit charity dedicated to the Model A Ford and its history. While the initial museum has been constructed, additional resources are needed to keep it in perpetuity and for possible expansion. MAFFI has a large collection of vehicles but cannot display them all at once. Membership in MAFFI will keep our hobby alive for future generations.

Friday evening, MAFFI presented a program on "Around the World in Model 'A' Fords," the story of four cars traveling around the world in 1982. The remastered DVD narrated by one of the original travelers was funny and amazing - talk about adventure. The 1930 Coupe from the trip is now on display in the Museum and Bruce Davis, former MAFCA President and participant in that tour, was on hand to answer questions. If you have the opportunity to see the DVD, by all means do, I am sure you will enjoy it. MAFFI is also selling Diane Davis' book, "Passports to Adventure" which chronicles the Around the World Drive.

MAFCA will be a Hershey again this year. Look for our balloon and stop by for a visit and to see our latest merchandise. It will also be a good chance to renew your membership if you have not already done so. Please remember to renew by December 31 to avoid the late renewal fee.

This year is moving fast. The next meeting of the Board will be in Reno, Nevada at the National Awards Banquet December 5 through 8. I hope to see you there! Your Board of Directors is dedicated to serving our membership. Please contact us with your ideas and concerns. I can be reached at [president@mafca.com](mailto:president@mafca.com) and I will respond.



## Lava Ladies



### **Coming events:**

At our November meeting we will have a sign-up sheet for our Holiday Potluck on December 12<sup>th</sup> and a sign-up sheet for 2017 Refreshments.

January 21<sup>st</sup>, 2017 will be a noon luncheon at the Lane Museum to plan our 2017 Lava Ladies events, please plan to attend and bring your ideas and suggestions!

At our October meeting we discussed a holiday community service project and several of us are researching some options, at our November meeting we will decide what we'd like to do and get organized.

Our Babies in Need luncheon was again a huge success. My, oh my you all are so very generous - we filled Carma's van with bags and bags of the cutest baby outfits. 5 members of the Beaver Babes joined us and we sure hope we can make it an annual tradition - what could be better, good food and good friends spending time together!





## 2016 National Awards Banquet Reno, Nevada

Hosted by The Sagebrush Chapter



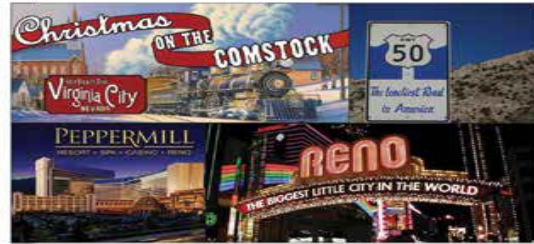
2016 National Awards Banquet  
Reno, Nevada - Peppermill Resort  
December 5-8, 2016

\$59 per night, if booked by November 2

Come learn the history of the Lincoln Highway

Enjoy a private Era Fashion dinner party at the  
National Automobile Museum

Visit Virginia City, home of Christmas on the Comstock



**Volcano A's License Plate  
Toppers will be available at the  
November Meeting.**



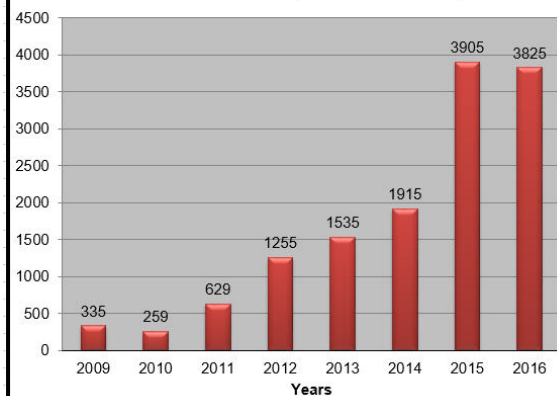
**Remember These!**



## **Community Service**

### Food Collection & Donations by Year

■ Pounds as of September Per Year



**MAFCA  
2016 Board of Directors  
Meeting**

Wednesday, December 7  
MAFCA National Awards  
Banquet  
The Peppermill Resort  
Reno, Nevada  
8:00 am - 4:00 pm

## **Lynn Sondenaa's 1930 Victoria Restoration**

This story is in Lynn's own words. "I finished the Victoria in February, and drove it to the upholstery shop in Gresham, Oregon. I had them do the upholstery from scratch, not a kit. It took them 2 1/2 months to do the job, but it only cost \$2200. which was a huge savings for me. It came out super good. I have around 500 miles on the car so far. I have a good power point presentation on the progression of the car from start to finish. I did the woodworking myself from scratch using blue prints from the Ford archives museum in Michigan. I also did all of the welding and body work, plus the painting of the car. I started in July 2011 and finished in February 2016. I took two years off to find hard to get parts, move the parent-in-laws, and I also had a little burn out. I will attach 4 photos for you. Photo 0510 shows what I started with. It was a total basket case!"





## **For Sale Items or Wanted**

To place an "Ad" send your information to [rrusunen@comcast.net](mailto:rrusunen@comcast.net), or call Bob Rusunen at 360-828-5317



### **1929 Model A Fordor Asking \$20,000**

Restoration was completed five years ago. Title is free and clear. The car is garage and stored in Battle Ground area. Great condition maroon with black fenders.

Contact: Brain Buck.

Phone: 360-624-4179

E-Mail: [chilleymoe@q.com](mailto:chilleymoe@q.com)

## **Roadsters Run in the 1934 Legion Ascot Targo Floria Race**



AAA sanctioned stock car racing was popular up until the mid-teens - after World War I it continued until about 1920 when it was relegated to small time promoters running events on dirt tracks across the country. Racing stripped production cars returned however in 1933 when the sanctioning body reinstated the once popular Elgin Race in Elgin, Illinois. The 250-mile competition was held on August 26 and won by Fred Frame (winner of the 1932 Indianapolis 500) driving a 1933 Ford roadster at an average speed of 80.22 mph. The event and a free-for-all race with Championship (Indy cars) were sponsored by the Elgin Watch Company

Source: The Old Motor.com.



## Support Our Club Suppliers

**A&B**  
**Radiator & Speedometer Service**

*Also Specializing in:*  
*A/C Service Heater Installation*  
*General Auto Repair*

8411 E. Fourth Plain (360) 256-1560  
 Vancouver, WA 98662 (360) 254-8329

Benny Bennett Holly Bennett



**Benny's Custom Rod & Pizza Cafe**

4219 St. Johns Rd NE • Vancouver, WA 98661 • (360) 993-0284  
[www.bennyspizzacafe.com](http://www.bennyspizzacafe.com)

**Bob's PAINT LAND**  
 HOUSEHOLD • AUTOMOTIVE • CUSTOM

Mark Stillman 1501 NE 99th St.  
 Vancouver, WA 98665  
 (360) 573-7133

[www.bobspaintland.com](http://www.bobspaintland.com)

**C'S AUTO MACHINE SHOP**

- FLYWHEEL GRINDING
- RESURFACING
- BORING
- THERMAL CLEANING
- ROD REBUILDING
- BLOCK DECKING
- VALVE GRINDING
- ENGINE REBUILDING
- KNURLING
- PIN FITTING
- PRESS WORK
- ROTORS & DRUMS

JIM  
**574-4934**

EDM  
 SPECIALISTS IN  
 REMOVING BROKEN TAPS,  
 DRILLS, STUDS & EASY-OUTS

OPEN M-F, 8 am-6 pm  
 800 NE 86th Street  
 Vancouver, WA 98665

*We Save You Money* [www.CostLessAutoParts.net](http://www.CostLessAutoParts.net)

**Cost Less Auto Parts™**

**"NO EXCUSES, Get it done!"**

**Orchards** **Hazel Dell** **Kelso**  
 360-254-5710 360-695-4423 360-353-5956

**DIVERSIFIED**  
 WELDING WORKS, INC.  
*Industrial Welding and WaterJet Cutting*

**WILL BINNS**  
 PRESIDENT

[willb@diversifiedweldingworks.com](mailto:willb@diversifiedweldingworks.com)

360-576-0929 • 877-835-0724 • 360-573-0824 Fax  
 8009 NE 19TH COURT • VANCOUVER, WA 98665



**HART RADIATOR**  
*Complete Radiator Service*

501 Grade Street, Kelso  
 Fax 360-425-1189

*Auto, Truck & Industrial*  
*Radiators, Heaters, & Air Conditioners*

**360-425-6220**

Doug Hart Allen Hart  
 360-430-3615 Cell 360-430-9169 Cell

**RUSTY LUGS**

SPECIALIZING IN MODEL A'S

Amanda Uthe  
 Owner

360-887-3346 M-F 9am-5pm  
 8021 Ne 142nd ave  
[Rustylugparts.com](http://Rustylugparts.com) Vancouver, Wa 98682

***Volcano View Newsletter***  
***Bob Rusunen, Editor/Webmaster***  
***3720 NW 116<sup>th</sup> Street***  
***Vancouver, WA 98685***



Courtesy from MAFCA - "A" of the Day photos