



Volcano A's, PO Box 970, La Center, WA 98629

www.volcanoas.net

Meeting: Church of the Nazarene - 16850 NE Fourth Plain Blvd, Vancouver, WA - Second Monday of Month - 7:00 PM

Guys breakfast meeting every Wed. (7:00am) at Hockinson Café, 219 NW 20th Ave, Suite 100, Battle Ground, WA

Guys lunch on Fridays (11:30 am) at Benny's Pizza & Café on 4219 St Johns Rd NE, Vancouver, WA

Volume 5 Issue 5

May

2016

2015 MAFCA Newsletter Certificate of Merit

2015 MAFCA Website of the Year

2013 MAFCA Newsletter of the Year 2013 MAFCA Website of the Year

2016 Club Officers

President:

Jerry Lane - 360-263-6980

northforkmuseum@gmail.com

Vice President:

Lynn Mattingley - 503-753-1363

lynnmattingley@aol.com

Treasurer:

Linda Willey - 360 687-0916

lindawilley@mac.com

Secretary:

Sherry Rusunen - 360-828-5317

rrusunen@comcast.net

Member at Large:

Leonard Willey - 360-687-0916

lindawilley@mac.com

Past President:

Jack Dusenberry - 360-256-0149

j dusie@comcast.net

Editor/Webmaster:

Bob Rusunen - 360-828-5317

rrusunen@comcast.net

Articles and contributions are encouraged and may be used as space permits. The deadline for all articles is the 20th of the preceding month. The Volcano View is a monthly publication of the Volcano A's Chapter - MAFCA E-mail all proposed articles to: rrusunen@comcast.net.

Photo of Month



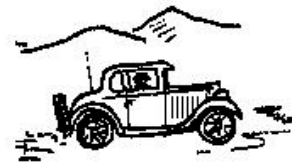
1928 Open Cab Pickup

Celebrate Memorial Day





President's Note
April 25, 2016



We just finished another year of fun and excitement at the Portland Swap Meet. Everyone involved had a great time and we made enough money to pay expenses and deposit some in the bank. In the future we would encourage more members to participate as this is a great event and contributes to keeping our car clubs healthy and moving forward. We are so lucky to have this event close to us, many folks have to travel hundreds of miles to enjoy.

Make plans to attend the Columbia Gorge Discovery Center Tour to The Dalles on May 21st, this is always very enjoyable touring the Gorge on Hwy 14.

Mark your calendar for a special 60th Wedding Anniversary on July 9th at the Lane's, we are not getting older, we are getting better.

Jerry

Committee Chairs

Community Service: Joyce
Swartz/Tom Ryan

Garage Workshop: Tom Pagel

Library/Historian: Terry Findley

NW Regional Rep: Jack Dusenberry

Public Relations: Dian Lane

Refreshments Coordinator: Nancy
Wooldridge

Sunshine: Pat Dusenberry

Tour Director: Lynn Mattingley

Front Page Photo

**Tom Ryan's 1928 Open Cab Pickup in
front of the western mural at the 2015
Northwest Region Meet in Wall Walla,
Washington.**



Note: Periodically some materials printed in our newsletter may have been borrowed from other club newsletters. We thank other clubs for sharing their newsletters with the Volcano A's. Also, when sources are known they will be included

Volcano A's General Membership Meeting Minutes

April 11, 2016

CALL TO ORDER: 7:00 pm by President Jerry Lane.

GUEST: No guests present

TOURS: Jack Dusenberry reported we will be going to Pearson Airport/Museum 1115 E. 5th St. on Sat. Ap. 16th. We will meet at 10:00 there following with lunch at 11:30 at Beaches. He also mentioned the Memorial service for Jim Ulrich which was Sun. Ap. 10.

TREASURER: Linda Willey gave the financial report.

EDITOR/WEBMASTER: Bob Rusunen stated there was substantial savings this month on the expense of the newsletter by emailing only to all members who have an email address.

COMMUNITY SERVICE: Joyce Swartz reported food collected for March was 70#'s bringing our year's total to 286#'s!!

SUNSHINE: Pat Dusenberry reported all is well!!!

LAVA LADIES: Dian Lane reported the ladies outing on May 14th will be a trip to Camas. More details and sign-up sheet will be at the next meeting.

OLD BUSINESS: John Carlile reported on the Regional meeting he attended at the Swap meet. There are several clubs sponsoring individual excursions for this summer since there is no Regional meet. Check websites for details. The 2017 Coos Bay Meet is shaping up.

The March minutes were approved by Austin Alling and seconded by Rich Simpson.

Jerry reported on the 2 memorials attended by club members for Eddy Pitts and Jim Ulrich.

Several club members attended both. A card was read that was passed out at Jim's memorial:

"Right before I die, I am going to swallow a bag of popcorn kernels to make the cremation a bit more interesting"!! Sounds like Jim!!!

The swap meet brought in \$373.00.

Jerry Lane mentioned the Pendleton excursion for June 18th & 19th. Space is still available.

LeRoy Helyer reminded everyone that the Battle Ground Burgerville is having their Car Meet for the Food Bank Fund Raiser on Tuesday Ap. 26th. Bring your car & enjoy!

NEW BUSINESS: Sherry Rusunen mentioned that now the nice weather is here, remember that the parking spaces next to the church at meetings is reserved for our Model A's!!

RAFFLE: Linda Foster won \$43.00!

REFRESHMENTS: Cake and ice cream was served by Carma Huset and Marilyn Elvestrom.

ADJOURNED: Meeting was adjourned by Jerry Lane.

Submitted by Sherry Rusunen.

Member Celebrations

Anniversary

18 Mike & Maly Grimm



11 Jerry Willis

15 Alicia Erickson

16 Roberta Emerick

17 Bill Dietrich

22 Linda Foster

25 Ruby Knudsen

28 Don Knudsen

29 Bill Peden

Refreshments

May: Sherry Rusunen & Joyce Swartz

June: MJ Peden & Jennie Ryan

July: Linda Willey & Pam McClaflin

August: Club Picnic

September: Sandra Guyot & Jann Jones

October: Becky Blick & Dianne Ernest

November: Roberta Emerick & Marylan Kelly

December: Holiday Potluck

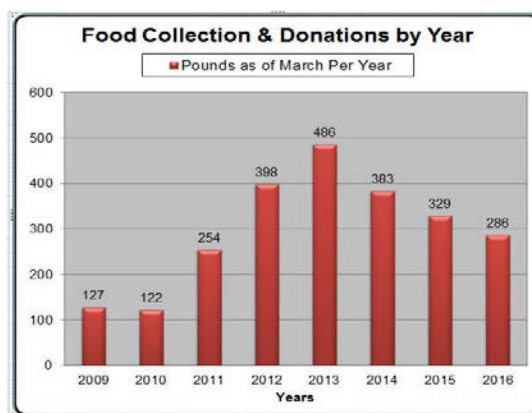
Factory Photo of the Month



1930 190 A PT Victoria

Community Service

Joyce Swartz reported food collected for March was 70#'s bringing our year's total to 286#'s.



Remember When...

In May 1930, the U.S. Supreme Court ruled that buying liquor does not violate the Constitution.

Future Events

May 7	Tri-Cities Swap Meet & Antique Car Display, Benton County Fairgrounds, Kennewick, WA
May 14	<i>Lava Ladies Camas Shopping & Lunch, Camas, WA</i>
May 14-15	43rd Annual Seattle Auto Swap Meet, Evergreen State Fairgrounds, Monroe, WA
Jun 4	<i>Lava Ladies - Oregon Gardens Tour, Silverton, OR</i>
Jul 9	<i>Bob & Carma Huset's 60th & Don & Delores LaBarre's 65th Anniversary @ the Lane's Museum</i>
Jun 24-26	36 th Annual Swap Meet, Brooks, OR
Aug 20	<i>Lava Ladies - Pit Stop Coffee Stand, La Center, WA</i>
Aug 27	39 th Annual LeMay Car Show, Tacoma, WA
Oct TBD	<i>Lava Ladies - Babies in Need - Rocky's Pizza, Battle Ground, WA</i>
Oct 14-15	PIR Fall Auto Swap Meet, Portland, OR
Dec 12	Christmas Dinner & Auction at the Lane's Museum

Tours

May 21	Columbia Gorge Discovery Center, The Dalles, OR (Cost \$9.00, meet at Pendleton Woolen Mills, leave @ 9:00AM, Camas, WA with Lunch at Baldwin Saloon)
Jun 11	Pacific Northwest Model A Picnic, Chehalis, WA
Jul 4	July 4 th Parade, Ridgefield, WA
Sep TBD	Annual President's Tour
Nov 11	Ft. Vancouver Veteran's Day Parade, Vancouver, WA

May 21, 2016



Ford Advertisement

A huge gamble for the company, the Ford Model A nevertheless proved to be a hit, and its basic engineering was so sound that its legacy lived on in Ford cars built through 1948.

Big four-cylinder engine

Big displacement four-cylinder engines were common in the 1920s, offering good low end power. The Model A's 201-cubic inch 40 bhp. enabled 0-60 mph times of just over 30 seconds.



improvement
1930 Model A
noticeable
out. However,
was as placed
today.

Four-wheel brakes

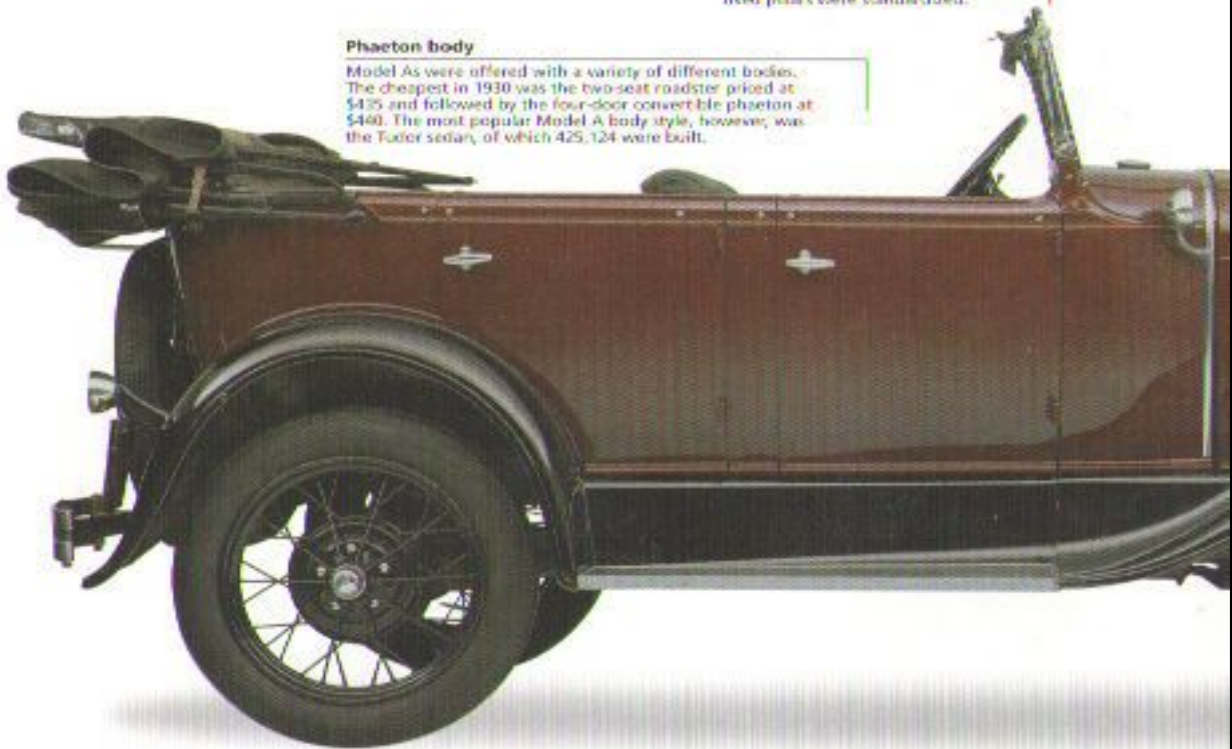
More complex than the T, the Model A introduced a few features worthy of merit. One such was four-wheel brakes, still mechanically operated, while 19-inch wheels were used instead of 21-inch wheels from 1930, resulting in greater safety and an improved ride.

Adjustable windshield

Like Roadsters, Phaetons had a windshield that could be lowered by hinging it forward to rest on the hood. This feature lasted until 1937, when fixed pillars were standardized.

Phaeton body

Model As were offered with a variety of different bodies. The cheapest in 1930 was the two-seat roadster priced at \$435 and followed by the four-door convertible phaeton at \$460. The most popular Model A body style, however, was the Tudor sedan, of which 425,124 were built.



Source: Ford Model A Advertising on Pinterest

Model A ERA Clothing Fashions



Source: Phillip Lenssen at vintageadbrowser.com

Bad Day On The Black Top

When your day runs amuck while out on a tour and you are far from home, have no fear, because just around the corner is another Model "Aer" nearby ready to help you get back on the road. Whether your mishap is a broken tie rod, a manifold falling off, or even a blown head gasket you can depend on fellow club members to help out.



My advice is to join the Model A Ford Club of America and get a member-ship roster for 2016. It is just amazing how many friends you will acquire.

Don't wait- pre-order a Membership Roster today from the MAFCA

Store: https://mafca.com/cart/index.php?show_price=yes%22

A special thanks to members of the Cowlitz Valley "A's" for replacing the blown head gasket. *Jack Dusenberry.*

LAVA LADIES



Thank you to Sandra Pargman and her sister Alicia for hosting a scrumptious tea at Sweet Peas in April. The food was great, the company enjoyable and the white chocolate umbrella's Sandra & Alicia made us were almost too pretty to eat.

May 14th we will be touring downtown Camas followed by lunch at Miss Nola's. We'll carpool as parking in Camas is limited, so meet us at Fred Meyers on Chkalov - near the gas pumps at 9:15 and we'll leave at 9:30.

Join us in touring the Oregon Garden in Silverton, Oregon on Saturday, June 4th. Let's plan to meet at Fred Meyers on Chkalov at 9:00 AM getting us to the Garden in time to do a tram tour and then explore on own followed by lunch. Hope you can come!!

You Ae Invited
to the
Eleventh Annual Celebration of the **Pacific Northwest Model A Picnic**
Saturday, June 11, 2016

The picnic will take place at 1354 Pleasant Valley Road, West of Chehalis, WA, and includes Model A's, pre-war and classic automobiles. This year's theme will be "Prohibition and the Jazz Age – 1927", and features the ***Ridge Runners Society Orchestra*** playing tunes from 1925 through 1933. The ***Puget Sound Military Vehicles Collectors Club*** will have some pre-war vehicles on display. Everyone is encouraged to dress for the era.

What to Bring: Pot-luck and folding chairs

NOTE

No hot rods or modified cars allowed at this event

Ticket Activity

White: Ticket for the Grand Prize Roadster Pedal Car will be given to all antique and Classic cars as they enter the covered bridge
Green: Ticket s for the door prizes can be picked up at the booth in the picnic area.
Red: Tickets for the Spirit of St. Louis display model will be sold at the booth in the picnic area.

Schedule of Events

11:00 AM	1929 Travel-Air Biplane, and rides will be available
12:00 Noon	Orchestra performs first half of program
Intermission:	Red Ticket drawing for <i>Spirit of St. Louis</i> display model Green Ticket drawing for Door Prizes
Orchestra performs second half of program	White Ticket drawing for the Grand Prize Roadster Pedal Car

Facilities: Out-houses, water and washing facilities.

The hosts and sponsors of this picnic wish to thank the visiting clubs for bringing and showing their cars.

Special thanks to Rod Rice for supplying the hamburgers and condiments.

The Billboard shows a 1927 Buick
For more information: 360-740-4831.

Pearson Air Museum Tour - April 16, 2016



Pearson Air Museum Tour (Con't) - April 16, 2016



Technical Notes

Seat Belts

By Ken Nelson

Seat belts are becoming a must in a Model A Ford if you drive your car a lot. At today's highway speeds and congestion, passengers traveling in a Model A Ford are vulnerable to serious injury if they are not properly restrained by seat belts. Passengers in the front seat can be thrown from the car due to the door latches coming open during an accident.

Most any seat belt sold on the market today has the required strength to properly restrain a person. Seat belts can be acquired from any number of suppliers.

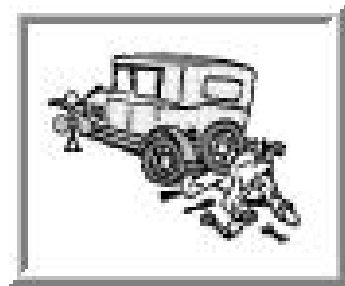
For a seat belt to provide adequate restraint it should be attached to the frame of the car. In many cases a convenient body bolt that attaches the body to the frame may be utilized. It is a good idea to replace the original bolt with a high strength hardened bolt. It may also be necessary to obtain a slightly longer bolt to better accommodate the seat belt anchor.

It is not be a good idea to anchor seat belts to the seat frame alone. The weight of two people may be sufficient during a high impact crash to cause the seat frame to be torn loose from the car.

If it is not possible to anchor a seat belt directly to the frame of the car, an alternative is to anchor them to the car body. Since the body is made only of sheet metal, it is possible the anchors could be torn loose in a high impact crash. It is advisable to position some angle iron support brackets under the car body so that the anchor bolts pass through the body and through the angle iron. Even if the angle iron support cannot be directly attached to the frame of the car it will provide additional strength by spreading the attachment characteristics across a wider area of the car body.

Keep in mind that the objective of seat belts is to restrain several hundred pounds of people in their seats without tearing loose should a crash occur.

The following picture is from the MAFCA web site, www.mafca.com. This happened in Medford Oregon to Dick Mace, who was on a club tour out on the rural roads. A pickup swerved into his lane and plowed head-on into his 1928 Phaeton. All four people in the car were wearing seat belts, and while they were injured they SURVIVED the crash.



Reprint from Script "A" Region, MARC, April 2016



Header from the MAFCA Website

MAFCA President's Page - Alex Janke - April 2016

It is clearly touring time, although some areas of the country are receiving some wild weather. I recently injured my knee and it is taking a long time to heal now that I am older. Well, I have been getting my Model A ready for tours, and keep discovering it is getting older in places too and needs more time to repair. As an example, one of my shock absorber balls required replacement as it had gotten out of round over its 85 years of traveling down the road. As you are getting ready for tours, take the time to look all around your cars and see what may have worn out.

Registrations for the National Convention in Loveland, Colorado, June 19th to 26th are pouring in with over 330 already. Registration forms can be obtained on the Mile High A's website <http://www.milehighcountry2016.org/>, or you may call the office for a copy. Don't miss out on this spectacular event - register soon.

MAFCA is still seeking candidates for the Board of Directors. A number of people have expressed interest, but there is still time. We are an organization of volunteers who love the Model A Ford hobby and wish to share the fun with others. Please consider joining the Board. Further information can be obtained from Trudy Vestal our Election Committee Chair. Trudy can be reached at ChapterCoordinator@mafca.com.

We are working on the Budget and as you can imagine keeping it balanced is a challenge. Due have remained constant for 10 years, but costs continue to climb. Fortunately, our membership remains strong so no increases are anticipated this year and we are looking at ways to reduce costs wherever possible while continuing services to our membership.

The final revision to the Restoration Guidelines and Judging Standards is getting very close. The dedicated volunteers working on this project spend at least 10 hours a week on it, trying to get the best possible photographs to aid in restoration. All text has been completed and we are only lacking a few photographs before it goes to the editor.

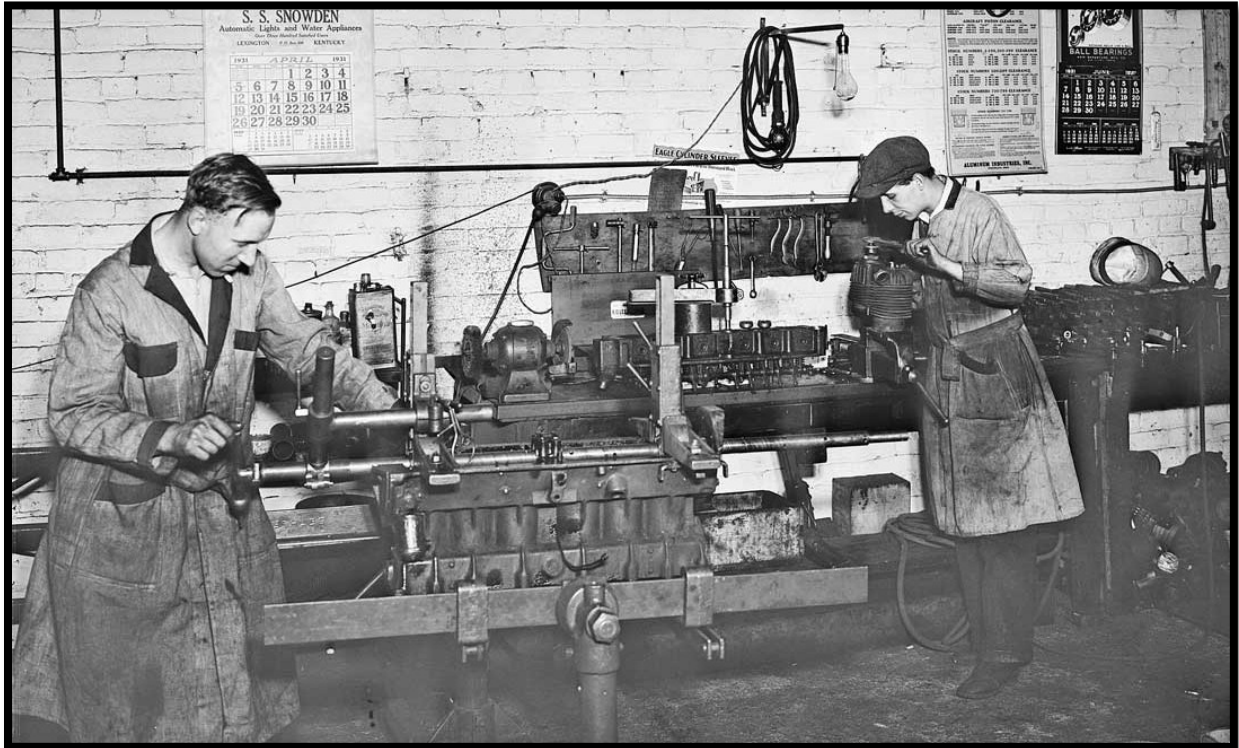
The Judging Standards Committee is planning on presenting seminars to highlight the changes incorporated in the new RG&JS. They will be offering this at the National Meet and as some regionals as well.

I enjoy the various emails and phone calls I receive from members. You often have great ideas we did not think of and I always learn something new. The Board serves you, the membership. We want to hear from you so we can do the best job possible. Please feel free to contact me or any of the Directors with your ideas and suggestions.

Information

The **Model A Ford Club of America, Inc. (MAFCA)** is a California non-profit corporation and a national historical society dedicated to the restoration and preservation of Model A Ford vehicles as manufactured from 1928 through 1931. MAFCA's members are dedicated to the restoration, preservation, and enjoyment of Ford vehicles of that era. MAFCA is the largest club in the world dedicated to one make of automobile. Volcano A members are urged to join the Model A Ford Club of America, Inc. Visit the MAFCA website for a membership application. Dues are \$40 yearly and include a subscription to The Restorer.

Scene From Another Time - A Busy 1930's Auto Machine Shop



Wombwell Auto Parts, located in Lexington, Kentucky not only sold auto and truck parts, but also run a fully equipped machine shop. This type of operation was common up until the early part of this century when many machine shops closed due to most engines lasting the life of the vehicle and a changing market.

Wombwell's machine work probably came to them from repair garages as far away as fifty miles or more and the trucks that delivered parts would bring in the work and return it when finished. Back then most service outlets would sublet the machine work needed and reassemble engines at their facility. It was a money maker for the parts seller because in addition to the profits from the shop labor it usually sold what was needed to do the complete job.

Follow along below to view and learn about the major pieces of equipment in the shop. In addition other machines handled the more routine work like brake rebuilding, drum and flywheel machining, clutch rebuilding, king pin service and other shop work.

The lead image taken in 1931 shows, left-to-right, an early portable hand operated line-boring fixture and a value service bench behind it.

Source: The Old Motor.com

Ford Model A Vehicle Identification



1928-29 STANDARD COUPE
(45-A)



1928-29 SPECIAL COUPE (46-
A)



1930-31 STD & BLK COUPE
(45-B)



1928-29 BUSINESS COUPE (54-
A)



1928-29 SPORT COUPE (54-A)



1930-31 SPORT COUPE (54-B)



1929 CABRIOLET (68-A)



1930-31 CABRIOLET (68-B)



1930-31 VICTORIA (104-A)



1930-31 CONVERTIBLE SEDAN
(400-A)



1930-28 TUDOR SEDAN (55-A)



1930-31 TUDOR SEDAN (55-B)



1929 STEELBACK FORDOR (48-
C)



1929-31 2-WINDOW FORDOR
(170-A,B)



1929-31 3-WINDOW FORDOR
(BURGESS)
(155-B,D/165A,D)



1929-31 3-WINDOW FORDOR
(BURGESS)
(155-A,C/165A,C)



1930-31 SLANT WINDSHIELD
FORDOR (160-A,B,C)



1928-29 LEATHERBACK
FORDOR (60-A,B)



1928-29 STANDARD PHAETON
(35-A)



1930-31 STANDARD PHAETON
(35-B)



1930-31 DELUXE ROADSTER
(48-B)



1928-29 STANDARD
ROADSTER (40-A)



1930-31 STANDARD
ROADSTER (40-B)



1930-31 DELUXE PHAETON
(180-A)



1928-29 OPEN CAB PICKUP
(76-A)



1930-31 OPEN CAB PICKUP
(76-B)



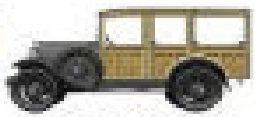
1928-29 CLOSED CAB PICKUP
(82-A)



1930-31 CLOSED CAB PICKUP
(82-B)



1928-29 STATION WAGON
(150-A)



1930-31 STATION WAGON
(150-B)

For Sale Items or Wanted

To place an "Ad" send your information to rrusunen@comcast.net, or call Bob Rusunen at 360-828-5317

1926 Ford Model T

2 door sedan with solid surface, rust only but solid and apart. It is moveable and may deliver. Asking \$3,500.

Call 360-573-3318 or email pagel4332@comcast.net

Model A Parts for Sale

4 ea Model A Mufflers - \$35.00/ea; 1 ea Model A Coupe Frame - \$100.00; 1 ea 1928 motor needs to be rebuilt - \$50.00.

Call: John Durr - 360-513-0961

Wanted

I'm looking for items to build a small display on my shop wall. I need one each of the following: 1928 or 1929 Radiator Shroud, 1928-1931 headlight bar, 1928-1931 headlight buckets. If you have only one of items it will get me started. These items are not for use or resale. The rustier they are the better as I'm planning to build a nostalgic display representing The Model A era.

Gary Swartz , 360.666.0637 , garyswartz4@msn.com

MAFCA National Convention



The Model A Ford Club of Colorado invites you to join us in Loveland, Colorado for the **2016 MAFCA National Convention** on June 19-24, 2016. Registration materials and full descriptions of events and activities was published in the Jan-Feb 2016 issue of the *Restorer* magazine and also available for download from our website www.milehighcountry2016.org

Support Our Club Suppliers

A&B

Radiator & Speedometer Service

Also Specializing in:
A/C Service Heater Installation
General Auto Repair

8411 E. Fourth Plain
Vancouver, WA 98662

(360) 256-1560
(360) 254-8329

Benny Bennett

Holly Bennett



4219 St. Johns Rd NE • Vancouver, WA 98661 • (360) 993-0284
www.bennyspizzacafe.com

Bob's
PAINT LAND
HOUSEHOLD • AUTOMOTIVE • CUSTOM

Mark Stillman

1501 NE 99th St.
Vancouver, WA 98665
(360) 573-7133

www.bobspaintland.com

C'S AUTO MACHINE SHOP

- FLYWHEEL GRINDING
- RESURFACING
- BORING
- THERMAL CLEANING
- ROD REBUILDING
- BLOCK DECKING
- VALVE GRINDING
- ENGINE REBUILDING
- KNURLING
- PIN FITTING
- PRESS WORK
- ROTORS & DRUMS

JIM

574-4934

OPEN M-F, 8 am-6 pm
800 NE 86th Street
Vancouver, WA 98665

EDM
SPECIALISTS IN
REMOVING BROKEN TAPS,
DRILLS, STUDS & EASY-OUTS

We Save You Money

www.CostLessAutoParts.net

Cost Less Auto Parts™

"NO EXCUSES, Get it done!"

Orchards
360-254-5710

Hazel Dell
360-695-4423

Kelso
360-353-5956

DIVERSIFIED
WELDING WORKS, INC.
Industrial Welding and WaterJet Cutting

WILL BINNS

P R E S I D E N T

willb@diversifiedweldingworks.com

360-576-0929 • 877-835-0724 • 360-573-0824 Fax
8009 NE 19TH COURT • VANCOUVER, WA 98665



HART RADIATOR
Complete Radiator Service

501 Grade Street, Kelso
Fax 360-425-1189

*Auto, Truck & Industrial
Radiators, Heaters, & Air Conditioners*

360-425-6220

Doug Hart
360-430-3615 Cell

Allen Hart
360-430-9169 Cell



SPECIALIZING IN MODEL A'S

Amanda Uthe
Owner

360-887-3346

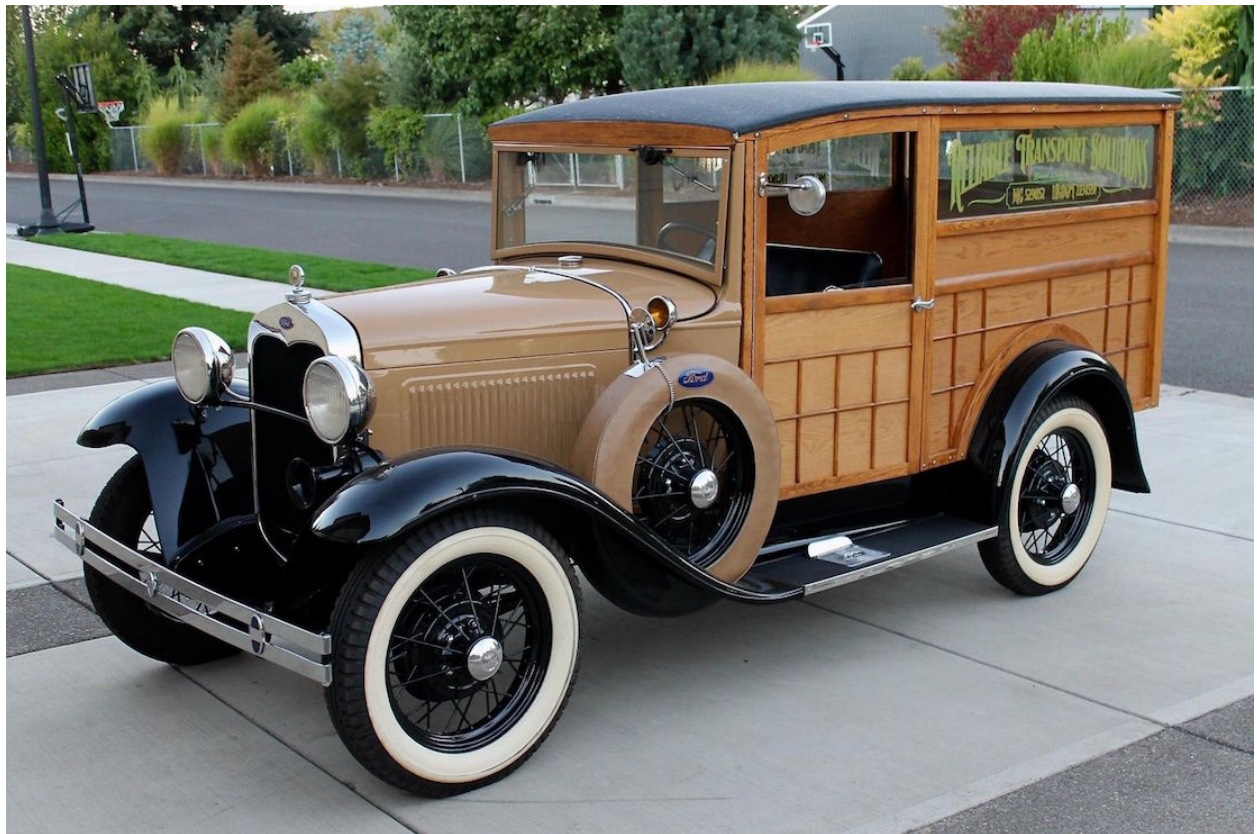
Rustylugparts.com

M-F 9am-5pm

8021 Ne 142nd ave

Vancouver, Wa 98682

Volcano View Newsletter
Bob Rusunen, Editor/Webmaster
3720 NW 116th Street
Vancouver, WA 98685



Courtesy from MAFCA - "A" of the Day photos