



Volcano A's, PO Box 970, La Center, WA 98629

www.volcanoas.net

Meeting: Church of the Nazarene - 16850 NE Fourth Plain Blvd, Vancouver, WA - Second Monday of Month - 7:00 PM

Guys breakfast meeting every Wed. (7:00am) at Hockinson Café, 219 NW 20th Ave, Suite 100, Battle Ground, WA

Guys lunch on Fridays (11:30 am) at Benny's Pizza & Café on 4219 St Johns Rd NE, Vancouver, WA

Volume 6 Issue 4

April

2017

2015 MAFCA Newsletter Certificate of Merit

2015 MAFCA Website of the Year

2013 MAFCA Newsletter of the Year 2013 MAFCA Website of the Year

2017 Club Officers

President:

Jerry Lane - 360-263-6980

northforkmuseum@gmail.com

Vice President:

Roger Green - 503-602-2668

Roger_o_green@yahoo.com

Treasurer:

Linda Willey - 360 687-0916

lindawilley@mac.com

Secretary:

Sherry Rusunen - 360-828-5317

rrusunen@comcast.net

Member at Large:

Leonard Willey - 360-687-0916

lindawilley@mac.com

Past President:

Jack Dusenberry - 360-256-0149

jdsie@comcast.net

Editor/Webmaster:

Bob Rusunen - 360-828-5317

rrusunen@comcast.net

Articles and contributions are encouraged and may be used as space permits. The deadline for all articles is the 20th of the preceding month. The Volcano View is a monthly publication of the Volcano A's Chapter - MAFCA E-mail all proposed articles to: rrusunen@comcast.net.

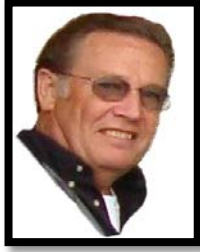
Photo of Month



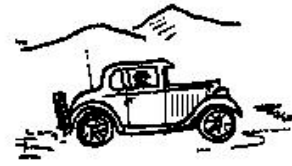
1931 Fordor Sedan

On Friday, March 31st at 11:00 AM there will be Graveside Services for Lynn Elvestrom at Evergreen Memorial Gardens, 1101 NE 112th Ave, Vancouver WA.

It would be great for all Model A's to be driven to this ceremony.



President's Note ***March 23, 2017***



These notes are dedicated to Lynn Elvestrom, whom we lost recently to a tragic farm accident. I first met Lynn in 1957 in the 9th grade at Battle Ground High School. Lynn was always very energetic and willing to jump in and help others before working on his own projects. For the last couple of months Lynn had been offering to help me install the engine in our Fordor, and I would always answer him that I would call him when I was ready, I wish I was ready on Friday, the day of the accident.

On Friday, March 31st at 11:00 AM there will be Graveside Services at Evergreen Memorial Gardens, 1101 NE 112th Ave, Vancouver WA.

Thanks Lynn for all your help.

Jerry

Committee Chairs

Community Service: Joyce
Swartz/Tom Ryan
Garage Workshop: Tom Pagel
Library/Historian: Open
NW Regional Rep: Jack Dusenberry
Public Relations: Dian Lane
Refreshments Coordinator: Nancy
Wooldridge
Sunshine: Pat Dusenberry
Tour Director: Roger Green

April 16, 2017



Front Page Photo

*Roger Green's later 1931 Model A
Fordor Sedan.*

A Bit of Trivia

*April 1929, the American Engineering
Council announced plans for uniform
traffic signals nationwide.*

Volcano A's General Membership Meeting Minutes
March 13, 2017

Call to Order: Jerry Lane called the meeting to order asking for a moment of silence in remembrance of Lynn Elvestrom. Jerry then led us in the flag salute.

Treasurer's Report: Linda Willey gave us all the details on checking and savings accounts.

Tour Director: Roger announced our scheduled March Garage Tour would be postponed due to the memorial service for Lynn Elvestrom. Jerry had the details for the service on Saturday, March 18th at 1:00 PM. We will meet in La Center leaving at 10 AM, stopping for lunch at Spiffy's and then on to the church, Peace Lutheran at 2071 Bishop Road in Chehalis. The Garage Tour will be now be April 15th. Our May 14th tour will be a potluck at Don and Ruby Knudsen's with a backroads tour.

Community Service: Joyce announced our February donation was 75 pounds giving us a total this year of 126 pounds.

Lava Ladies: March 31st the Lava Ladies will travel to Cannon Beach to attend a play, spend the night in Seaside and return on Saturday, April 1st.

Old Business: A motion was made and seconded to approve the minutes of the last meeting as printed in the newsletter.

NW Regional is June 22, 23 & 24. We'll meet at ODOT (Jantzen Beach) at 8 AM and take 2 days coming home. We will spend the night Sunday, June 25th at the Ashley Inn in Lincoln City. When you call to make reservations be sure to tell them you're with the Volcano A's.

New Business: April 7, 8 & 9 is the Portland Swap Meet. Our booth number is 4064 in E building - same spot we've had for several years. If you've got parts to sell, bring them to breakfast on Wednesday and Jerry will get them to the swap meet.

The MAFCA membership form is in the newsletter and there's a special offer for brand new members.

50/50 Raffle: Deone Schroeder won \$40 and the club got \$39.

Refreshments: Nancy indicated she still needs a couple of volunteers. Thanks to Marylan Kelly and Becky Blick for the St Patrick's themed goodies!

Seminar: A video on timing and the distributor.

Meeting Adjourned by Jerry Lane.

Minutes submitted by Dian Lane

Lava Ladies



April 21st, we will be going to Albertina Kerr for shopping and lunch.

Meeting at 9:30AM - leave at 9:45 at Chkalov - Fred Meyer.

Lunch at 12:00 noon.

This is always a fun place, and good food - and supports children and adults with developmental disabilities and mental health challenges.

Sign up at the April Meeting.

In Memory of Lynn Erling Elvestrom



Lynn E. Elvestrom, son of Ben and Hilda Elvestrom was born on the 21st of August in the year of the Lord 1942 in Sacred Heart, MN.

And what a fine man he became. He was name Lynn Erling at his baptism. Lynn grew up in Battle Ground, Washington. He had a chance to be a pen pal to a friend in India. He participated in 4H club, Future Farmers of America, worked on various shop projects in High School. As a youth, he helped build his home church (Elim Lutheran in Hockinson, Washington). The day after High School he moved away from the farm and went to work for Ray Lagler on his dairy.

On June 7, 1964, Lynn and Marilyn were joined in holy matrimony and raised two children: Eric and Heidi.

In 1972 Lynn graduated from Green River College in Auburn, Washington with an AA in Forestry Technology. He found as a Logging Engineer at Weyerhaeuser Company in Snoqualmie, WA. In 1987 he left Weyerhaeuser to start his surveying company.

In 1976, Lynn's family moved to Valley Camp Retreat Center in North Bend, WA. Lynn had numerous skills that kept him busy: woodworking, restoring antique vehicles, gas pumps and tractors, building model trains, and refinishing antique sewing machines.

Lynn loved the Lord and life. He loved people. He loved to tell people stories of his life experiences. He loved to bring humor to the Model A club newsletter. He loved to use his hands to help others build things. He loved to sing, tap his toes to good music, and play his upright bass. He loved to travel and see new places. He also loved to test people with his inquisitive mind.

Lynn is survived by his wife Marilyn, his son Eric and daughter Heidi, his brother Michael and sister Jo Ann. He has four grandchildren Jared, Sarah, Rebekah and Joshua. He also has one great grandchild: Otti.



Anniversaries

3 Jerry & Marcie Morgan
7 Tom & Jennie Ryan
24 George & Sue King

Birthdays

1 Cassandra LaFleur
1 Roderick Rice
10 John Earnest
11 Pete Hazard
15 Arleta Thompson
21 Epaminonda Telio

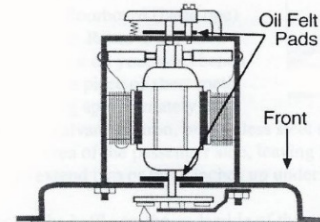
Refreshments

May: Joyce Swartz & Carma Huset
June: Kathy Green & Linda Nielsen
July: Nancy Wooldridge & Bibbi Lee
August: Annual Club Picnic
September: MJ Peden & Linda Freimuth
October: Open
November: Roberta Emerick & Dianne Earnest
December: Holiday Potluck @ Lane's



HORN LUBRICATION

Lubricating their horn is one item that some people overlook. There are two felt pads at the armature area of your horn. Put two (2) drops of 3-1 type oil on each felt oiler pad about two times a year and this will help keep your horn working. DO NOT OVER OIL.



Submitted by Tony Topicz, Ohio Valley Region.
Illustrated by Dick Lewis, Lawrenceburg, Indiana

Factory Photo of the Month



1928 50-A Sport Coupe

Note: Periodically some materials printed in our newsletter may have been borrowed from other club newsletters. We thank other clubs for sharing their newsletters with the Volcano A's. Also, when sources are known they will be included.

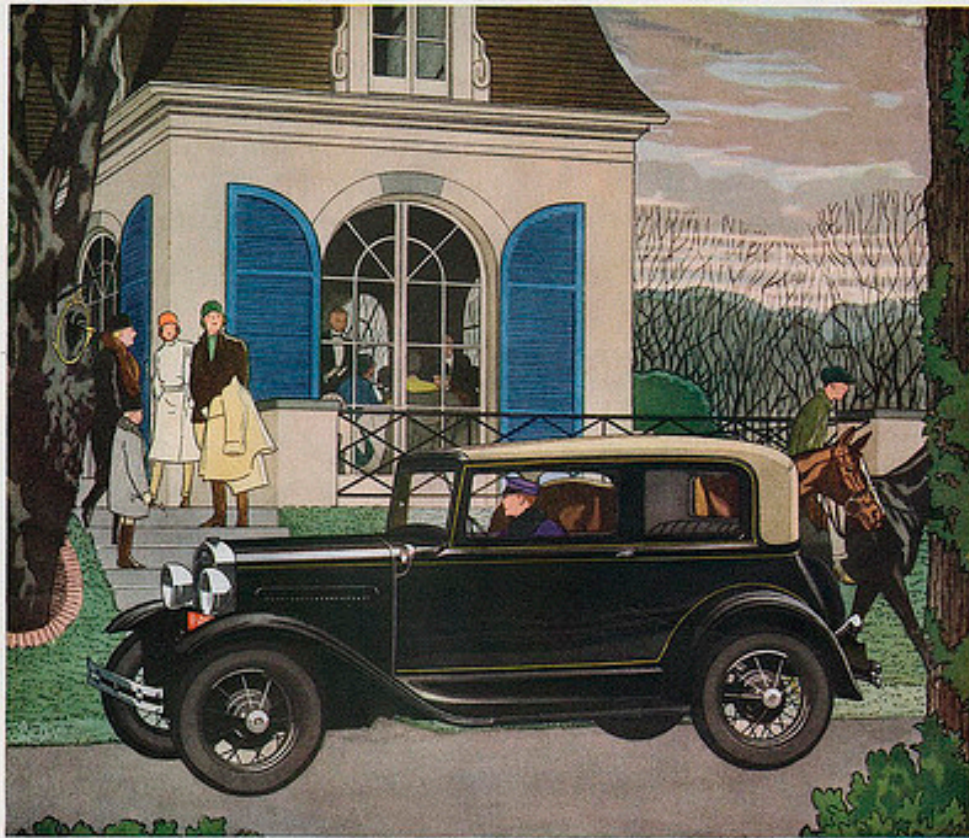


Ford Advertisement

March, 1931

LADIES' HOME JOURNAL

The New Ford Victoria



❖ A NEW FORD BODY TYPE OF DISTINCTIVE BEAUTY ❖

The newest, latest addition to the wide variety of Ford body types is the distinguished four-passenger Victoria. It marks a new degree of beauty and of value in a low-price car.

The striking lines of the Ford Victoria are especially apparent in the graceful sweep of the straighter, lower top, the slanting windshield and the curving bustle back, with the spare wheel set at a conforming angle. There is a suggestion of continental design also in the shape and size of the side windows and the intimate interior arrangement.

The comfortable, deeply cushioned seats are carefully tailored and upholstered in luxurious mohair or fashionable Bedford cord, optional with the purchaser. Colors, appointments and hardware reflect the mode and manner of a custom-built car.

With all its new beauty and outstanding mechanical performance, the Ford Victoria sells at a low price. In addition, you may purchase it on convenient, economical terms through the Authorized Ford Finance Plans of the Universal Credit Company.



Source: Ford Model A Advertising on Pinterest

Model A ERA Fashions

MODERN COLOR **MODERN DESIGN**

Now
Pajamas are Alive with Color

The tempo of the times dictates color—jade, ketchup, salmista; royal blue, jets and jans, bathosens in a blend of naive, and pastel tinted typewriters. Gaze the gown! Behold the pyjama! Glover Pajamas have led in the parade of color in LIBERTY because LIBERTY affords a harmonious setting—an alert, responsive audience always in the scent for the smart and the new. ¶Excellent four-color printing, an essential in realistic portrayal of products in color, is a factor in the choice of LIBERTY by the H. B. Glover Company. ¶The advertiser's original plates, used in a recent advertisement in LIBERTY, have been used again for this reproduction. The paper is of the same grade, made solely for LIBERTY—11 pounds heavier than the paper used by the Saturday Evening Post in four-color printing. Heavy stock paper does make a difference. Compare the printing!

Liberty
is Weekly for Everybody

LIBERTY's Week for 1935
 A larger and better magazine
 A much larger circulation
 The answer to advertising costs

Now over 1,500,000 average
 net paid circulation
 guaranteed

GLOVER PAJAMAS

Mitchell-Parr Advertising Company prepares the advertising of the H. B. Glover Company

Source: Phillip Lenssen at vintageadbrowser.com

You Are Invited
to the
Twelfth Annual Celebration of the Pacific Northwest Model A Picnic
Saturday, June 10th, 2017

The picnic will take place at 1354 Pleasant Valley Road, West of Chehalis, WA, and includes Model A's, pre-war, and classic automobiles. This year's theme will be the 1939 world premier of the motion picture, "**Gone With The Wind**". Since called the "Greatest motion picture ever made," this movie was set in and around Atlanta, Georgia during the Civil War, and this year's tableau includes some members from the Washington Civil War Association (WCWA). The **Palm Court Dance Orchestra** will be playing tunes from 1932 through 1937, and everyone is encouraged to dress for the late 1930s.

What to Bring: Pot-luck food and folding chairs

NOTE

No hot-rods or modified cars allowed at this event.

Ticket Activity

- White:** Tickets for the **Grand Prize pedal car** will be given to all antique and classic cars as they enter the covered bridge.
- Green:** Tickets for the door prizes can be picked up at the booth in the picnic area.
- Red:** Tickets for the **Split-The-Pot** will be sold at the booth in the picnic area.

Schedule of Events

11:00 AM Antique Biplane fly-in. Air rides will be available.

12:00 Noon Orchestra performs first half of program

Intermission : Red Ticket drawing for **Split-the-Pot**.
Green Ticket drawings for Door Prizes

Orchestra performs second half of program

White Ticket drawing for the **Grand Prize Pedal Car**

Facilities: Out-houses, water and washing facilities.

The hosts and sponsors of this picnic wish to thank the visiting clubs for bringing and showing their cars.

Special thanks to **Rod Rice** for supplying the hamburgers and condiments.

- The Billboard shows a 1939 Dodge

For more information: (360) 740-4834

Technical Notes

Ethanol Fuel

By Lynn Sondenaa

I will start this article with my own quote, "Stubbornness creates Stupidity". Why do I believe in this quote? Hopefully this article will shed light on the quote. I work on a lot of different Model A's to get them to run for their owners. I find that most of the time the problem is self-inflicted by the owner's stubbornness.

Gasoline or ethanol gasoline is the one problem that I encounter the most often as to why the Model A will not run. First, one must understand what ethanol fuel is and not to be afraid of using ethanol fuel. It is also known as ethyl alcohol and it is the same type of alcohol found in alcoholic beverages. It is a biofuel additive for gasoline added from 10% to 85%. Ethanol is made from plant materials containing starches and sugar. Corn is the most common plant used, but sugar cane, sugar beets, and potatoes are used in production of ethanol.

Production of ethanol is a four-step milling process.

1. Plant mass ground up
2. Cooking process to create sugar
3. Microbes such as yeast or bacteria added to feed on the sugar (Fermentation)
4. Distilled to obtain a high concentration of ethyl alcohol

Part of understanding ethanol fuel is to understand its history. A lot of individuals think it is a new government idea. In 1826 the first United States patent for an internal-combustion engine was granted to Samuel Morey. Well, guess what the engine used for fuel. Yes, it was ethyl alcohol. It should be noted that in the 1860's farm equipment in Europe was routinely driven by ethyl alcohol engines. In the 1890's in the USA most automobiles were designed to operate on ethyl alcohol.

Now let's fast forward to today. I will discuss all of the negative facts about ethanol fuels and then end with how to combat these negative effects. It is known to corrode soft metals such as pot metal, zinc, brass, lead, aluminum, and terne plate. This is a reactive process that results in a white chalky corrosion. Ethanol is a very good solvent that cleans, and it is a hygroscopic. It can absorb water from its surroundings. Ethanol is incompatible with non-metallic materials such as natural rubber, polyurethane, cork and leather. It can swell up gaskets causing them to expand. It can also make them gooey. There are ways to avoid the negative effects of ethanol fuel. Some people purchase non-ethanol fuel, but this is a short-term fix as this fuel is being phased out of production. In a few years, it will not exist. It is easy to avoid the negative effects of ethanol, but stubbornness must be removed. I recommend that 4 ounces of Marvel Mystery Oil be added to each 10 gallons of fuel. In the days prior to 1976 lead was added to fuel for lubrication. The Model A needs the gas tank shut off valve, carburetor float valve and

valve train lubricated internally. The Marvel Mystery Oil will now aid in that lubrication. It will also help to keep the spark plugs free of carbon deposits.

Most Model A owners do not use their vehicles for daily drivers so the A's sit and the fuel will lose its volatility. Also, Model A gas tanks are plated with aterne coating (steel covered with an alloy of tin and lead). Metal creates condensation moisture which is bad. New vehicles and small gas power tools have plastic fuel tanks to help eliminate condensation problems.

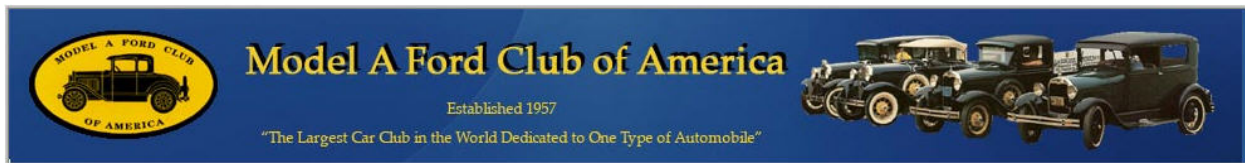
Sta-Bil fuel additive will keep ethanol fuel from losing its volatility and help with the solvent tendencies. I add 4 ounces to 10 gallons of fuel. It will protect the ethanol fuel and help protect the gaskets for twelve months. The Stihl gas power tool company got tired of owners bringing back chain saws, weed eaters, and blowers that would not start or had small pin holes in their gaskets. They solved this problem by placing fuel stabilizers directly into their 2-cycle motor oil. A fuel stabilizer is only need if the Model A is not going to be used for a three week period or more.

Other considerations to follow are to coat the inside of the Model A gas tank with a good grade of gas tank sealer (USA made). This will prevent the ethanol from attacking theterne plating. It also helps to seal pin holes and rust areas. Replace the gas gauge gaskets and float with neoprene, remembering that ethanol will eat away cork gaskets. Do not use the cheap foreign neoprene gaskets, use gaskets made in the USA. Neoprene is a synthetic rubber produced in six grades. The foreign gaskets will expand or become gooey because they use a low grade of neoprene, whereas the USA gaskets are made with a higher grade of neoprene. Replace the carburetor float valve with a Viton tipped needle valve, or even better yet, use the ball bearing float valve (Grose jet style).

Do not drain the fuel tank as this will allow for condensation to form inside the tank and it will also dry up the gas gauge gaskets and float. The fuel tank should be kept 95% full with a fuel stabilizer added. Also, do not shut off the fuel valve and let the engine run until it uses the fuel out of the carburetor bowl. This practice will dry out the carburetor gaskets. Do turn off the engine and close the fuel shutoff valve. A general note to remember is that if you see small clear curds in the sediment bowl that is ethanol fuel going bad. At this stage the fuel tank must be drained and flushed.

In conclusion, use 4 ounces of Marvel Mystery Oil to 10 gallons of gasoline, don't drain the fuel tank or carburetor bowl, and use 4 ounces of Sta-Bil fuel stabilizer for each 10 gallons of gasoline. Note if you are using your Model A weekly or touring you do not need fuel stabilizer. If you follow my advice you will enjoy not having fuel and gasket problems!





Header from the MAFCA Website

MAFCA President's Page – Happy Begg March 2017



Spring arrives this month and thus for most of the country, the Model A touring season begins for 2017. I hope all of you are ready for some wonderful, fun days in your cars with your friends. There isn't a more relaxing day than driving the back roads and enjoying it from the front seat of a Model A!

Our Contact List for information and the happenings within MAFCA is growing! Are you receiving the monthly emails packed with information including activities of MAFCA Chapters, Regions, and Special Interest Groups? If you are not, send an email to [Garth Shreading](#) and he will make sure you receive them. Please know that MAFCA will never sell or share your email contact information.

The January/February and March/April Digital Editions of *The Restorer* have been delivered to those of you who signed up for it. If you did not sign up and would like to receive the magazine online - to take with you everywhere you take your laptop, tablet, or smart phone, call the office, 562-697-2712, and the ladies will be more than happy to assist you.

Registration for the 2017 National Tour is now open for all members. You will find links to in-depth information about the tour and registration forms on our website and in the March/April issue of *The Restorer*. You will not be able to download the forms from the Digital issue of *The Restorer*, as the magazine is not downloadable for personal use.

Each year, MAFCA seeks candidates for the Board of Directors from all over the US. Your help is needed to guide our club; and this year, there will be four vacancies. In the March/April issue of *The Restorer* and on the website, [Running for the Board Page](#), you will find answers for basic questions about what being a Board member would entail. If you have more questions, please contact [Garth Shreading](#), 2017 MAFCA Membership Director and Election Chairperson.

Of course, if you find yourself in the area where the Board will be meeting, please come and watch your Board in action! Board meetings are open to all members of MAFCA. Our next one will be held at MAFCA Headquarters in La Habra, a suburb of Los Angeles on Friday, May 12, 2017 beginning at 8:00 AM. The dates and locations for 2017 Board meetings are on the website [Board Calendar page](#). Perhaps you could join us at the Model A Museum in September or in Oklahoma City in December.

Until next month - Happy Motoring

The Model A Ford Club of America, Inc.
(MAFCA) is a California non-profit corporation and a national historical society dedicated to the restoration and preservation of Model A Ford vehicles as manufactured from 1928 through 1931. MAFCA's members are dedicated to the restoration, preservation, and enjoyment of Ford vehicles of that era. MAFCA is the largest club in the world dedicated to one make of automobile. Volcano A members are urged to join the Model A Ford Club of America, Inc. Visit the MAFCA website for a membership application. Dues are \$40 yearly and include a subscription to **The Restorer**.

Central CA Regional Group Jamboree
2017 - March 24-25 - Porterville, California
Host: Happy Hookers Chapter

Northern California Regional Group Roundup
2017 - May 16-20 - Lodi, California
Host: Hub Tour

Northwest Regional Group Meet
2017 - Jun 22-24, Coos Bay, Oregon
Host: Myrtlewood A's

MAFCA National Convention
2018 - June 24-29 - Reno-Sparks, Nevada
Host: Northern California Regional Group

Support Our Club Suppliers

Benny Bennett Holly Bennett



4219 St. Johns Rd NE • Vancouver, WA 98661 • (360) 993-0284
www.bennyspizzacafe.com

C'S AUTO MACHINE SHOP

- FLYWHEEL GRINDING
- RESURFACING
- BORING
- THERMAL CLEANING
- ROD REBUILDING
- BLOCK DECKING
- VALVE GRINDING
- ENGINE REBUILDING
- KNURLING
- PIN FITTING
- PRESS WORK
- ROTORS & DRUMS

JIM
574-4934

OPEN M-F, 8 am-6 pm
800 NE 86th Street
Vancouver, WA 98665

EDM
SPECIALISTS IN
REMOVING BROKEN TAPS,
DRILLS, STUDS & EASY-OUTS

We Save You Money www.CostLessAutoParts.net

Cost Less Auto Parts™

"NO EXCUSES, Get it done!"

Orchards 360-254-5710	Hazel Dell 360-695-4423	Kelso 360-353-5956
---------------------------------	-----------------------------------	------------------------------

Amanda Uthe
RustyLugParts.com

Rusty Lugs Rod's & A's

Open: M-F 9am-5pm
Formerly:
Floyds Model A Parts

8021 NE 142nd Ave
Vancouver, WA 98682
p. 360-887-3346
rustylugparts@gmail.com

For Sale Items or Wanted

To place an "Ad" send your information to rrusunen@comcast.net, or call Bob Rusunen at 360-828-5317

No items listed for sale or wanted this month.



SIX PORTLAND AREA ANTIQUE CAR CLUBS ANNOUNCE

The 53rd Annual "Always in April"

2017 PORTLAND SWAP MEET

FRIDAY - SUNDAY, APRIL 7-8-9, 2017

EXPOSITION CENTER, 2060 N. Marine Dr., Portland, OR 97217

Volcano View Newsletter
Bob Rusunen, Editor/Webmaster
3720 NW 116th Street
Vancouver, WA 98685



Courtesy from MAFCA - "A" of the Day photos